

KD-Validated Anti-ACADVL Rabbit Monoclonal Antibody

Rabbit monoclonal antibody

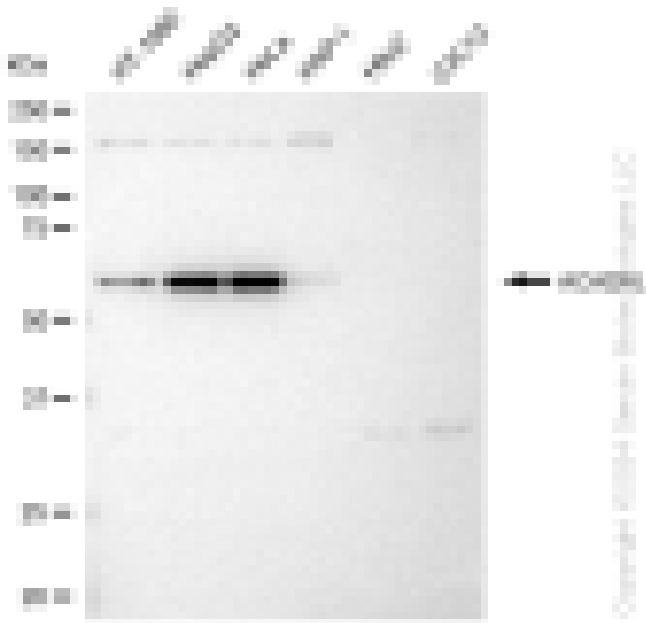
ABG1225

Product Overview

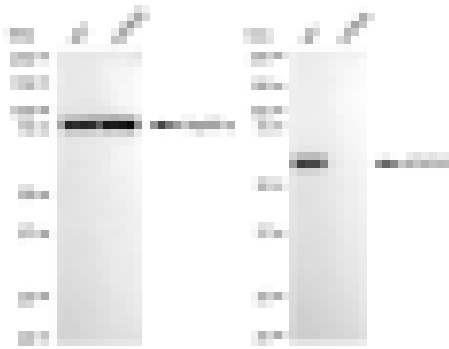
Name	KD-Validated Anti-ACADVL Rabbit Monoclonal Antibody
Catalog #	ABG1225
Clonality	Monoclonal
Accession(Primary)	P49748
Application Note (Approx.)	WB1:5,000 FC1:2,000 ICC1:1,000
Precautions	

Target information(P49748)

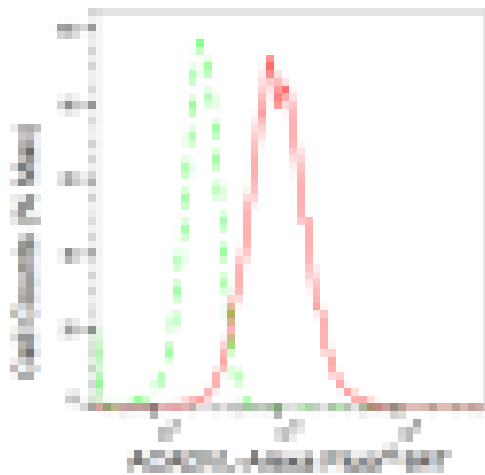
Synonyms**Gene ID****Other Names****Function****Cellular location****Note**



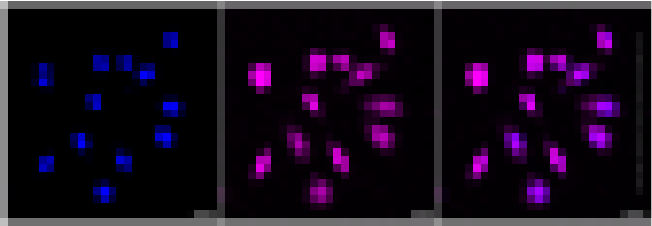
Western blotting analysis using anti-ACADVL antibody (Cat#ABG1225). Total cell lysates (30 µg) from various cell lines were loaded and separated by SDS-PAGE. The blot was incubated with anti-ACADVL antibody (Cat#ABG1225, 1:5,000) and HRP-conjugated goat anti-rabbit secondary antibody respectively.



Western blotting analysis using anti-ACADVL antibody (Cat#ABG1225). ACADVL expression in wild type (WT) and ACADVL shRNA knockdown (KD) HeLa cells with 30 μ g of total cell lysates. Hsp90 serves as a loading control. The blot was incubated with anti-ACADVL antibody (Cat#ABG1225, 1:5,000) and HRP-conjugated goat anti-rabbit secondary antibody respectively.



Flow cytometric analysis of ACADVL expression in HepG2 cells using ACADVL antibody (Cat#ABG1225, 1:2,000). Green, isotype control; red, ACADVL.



Immunocytochemical staining of HepG2 cells with ACADVL antibody (Cat#ABG1225, 1:1,000). Nuclei were stained blue with DAPI; ACADVL was stained magenta with Alexa Fluor® 647. Images were taken using Leica stellaris 5. Protein abundance based on laser Intensity and smart gain: Medium. Scale bar: 20 μ m.