

KD-Validated Anti-ACBD3 Rabbit Monoclonal Antibody

Rabbit monoclonal antibody

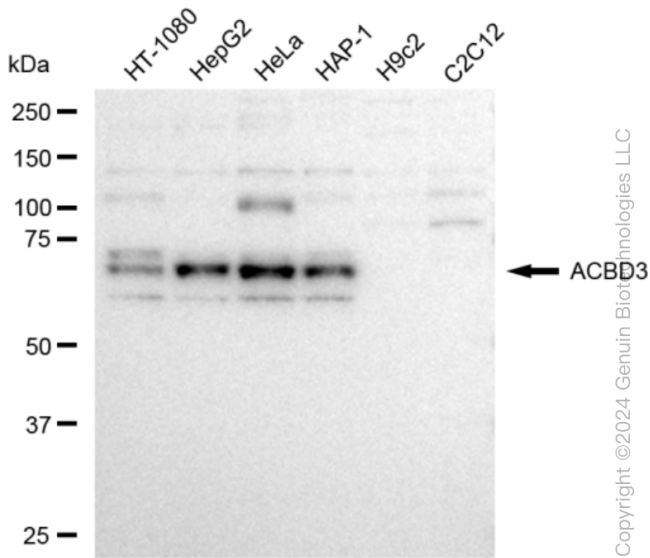
ABG1215

Product Overview

Name	KD-Validated Anti-ACBD3 Rabbit Monoclonal Antibody
Accession(Primary)	Q9H3P7
Host Species	Rabbit
Clonality	Monoclonal
Isotype	Rabbit IgG
Immunogen	A synthesized peptide derived from human ACBD3
Species Reactivity	Human
Calculated MW	Predicted, 60 kDa , observed, 70 kDa
Storage Buffer	Supplied in PBS (pH 7.4) containing 50% glycerol, and 0.02% sodium azide.
Recommended Dilution	Western Blotting (WB): 1:1,000-1:5,000 Flow Cytometry (FCM): 1:2,000 Immunocytochemistry (IC): 1:1,000

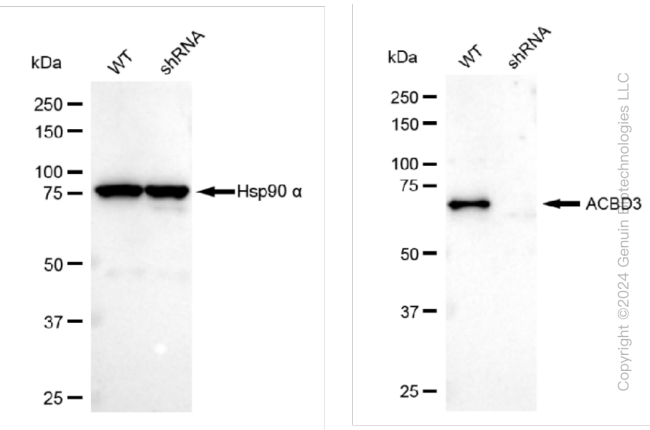
Target information (Q9H3P7)

Gene Name	ACBD3
About Gene Symbol	ACBD3 (Acyl-CoA Binding Domain Containing 3) is a membrane receptor involved in receptor-mediated signaling. It is an important research target in cell signaling, drug discovery, and cancer research and is widely studied to elucidate cellular mechanisms and identify therapeutic targets.



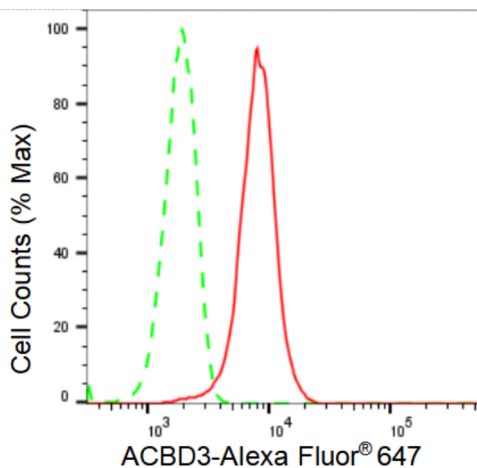
Copyright ©2024 Genuin Biotechnologies LLC

Western blotting analysis using anti-ACBD3 antibody (Cat#ABG1215). Total cell lysates (30 µg) from various cell lines were loaded and separated by SDS-PAGE. The blot was incubated with anti-ACBD3 antibody (Cat#ABG1215, 1:5,000) and HRP-conjugated goat anti-rabbit secondary antibody respectively.



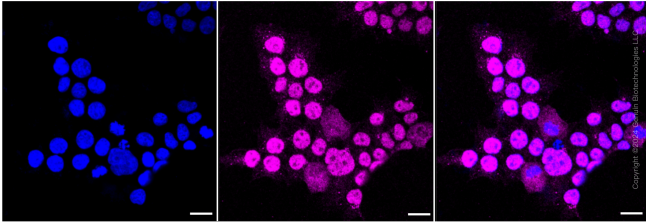
Copyright ©2024 Genuin Biotechnologies LLC

Western blotting analysis using anti-ACBD3 antibody (Cat#ABG1215). ACBD3 expression in wild type (WT) and ACBD3 shRNA knockdown (KD) HeLa cells with 30 µg of total cell lysates. β-Tubulin serves as a loading control. The blot was incubated with anti-ACBD3 antibody (Cat#ABG1215, 1:5,000) and HRP-conjugated goat anti-rabbit secondary antibody respectively.



Copyright ©2024 Genuin Biotechnologies LLC

Flow cytometric analysis of ACBD3 expression in HeLa cells using ACBD3 antibody (Cat#ABG1215, 1:2,000). Green, isotype control; red, ACBD3.



Immunocytochemical staining of HeLa cells with ACBD3 antibody (Cat#ABG1215, 1:1,000). Nuclei were stained blue with DAPI; ACBD3 was stained magenta with Alexa Fluor® 647. Images were taken using Leica stellaris 5. Protein abundance based on laser Intensity and smart gain: Medium. Scale bar: 20 μ m.