

# KD-Validated Anti-ACSS2 Rabbit Monoclonal Antibody

*Rabbit monoclonal antibody*

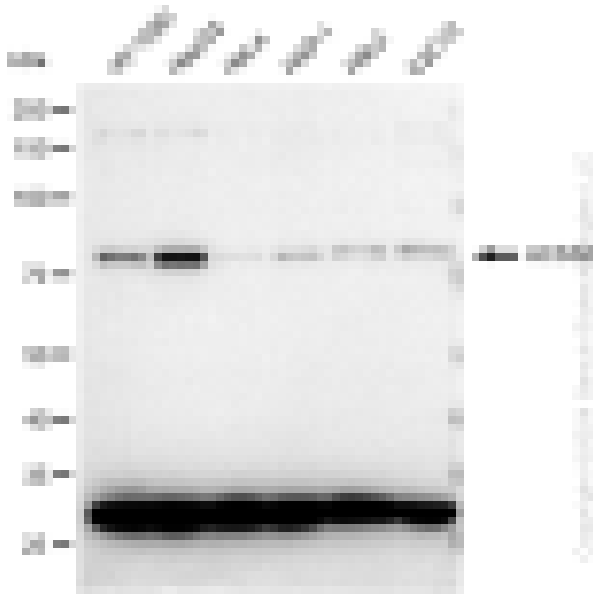
ABG2350

## Product Overview

<b>Name</b>	KD-Validated Anti-ACSS2 Rabbit Monoclonal Antibody
<b>Catalog #</b>	ABG2350
<b>Clonality</b>	Monoclonal
<b>Accession(Primary)</b>	Q9NR19
<b>Application Note (Approx.)</b>	WB1:5,000 FC1:2,000
<b>Precautions</b>	

## Target information(Q9NR19)

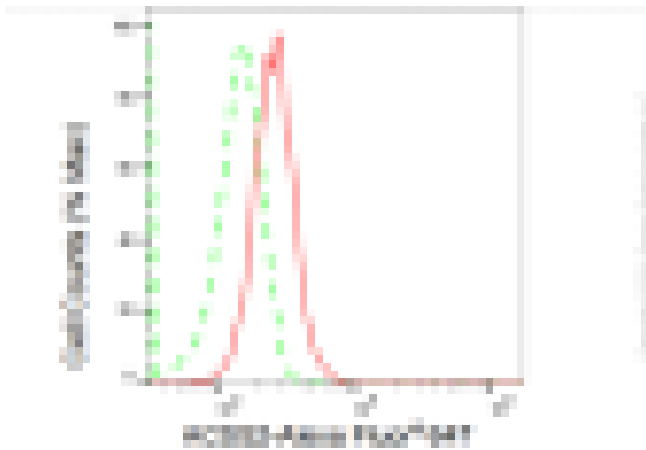
**Synonyms****Gene ID****Other Names****Function****Cellular location****Note**



Western blotting analysis using anti-ACSS2 antibody (Cat#ABG2350). Total cell lysates (45 µg) from various cell lines were loaded and separated by SDS-PAGE. The blot was incubated with anti-ACSS2 antibody (Cat#ABG2350, 1:2,500) and HRP-conjugated goat anti-rabbit secondary antibody respectively.



Western blotting analysis using anti-ACSS2 antibody (Cat#ABG2350). ACSS2 expression in wild type (WT) and ACSS2 shRNA knockdown (KD) HeLa cells with 30 µg of total cell lysates.  $\beta$ -Tubulin serves as a loading control. The blot was incubated with anti-ACSS2 antibody (Cat#ABG2350, 1:5,000) and HRP-conjugated goat anti-rabbit secondary antibody respectively.



Flow cytometric analysis of ACSS2 expression in HepG2 cells using ACSS2 antibody (Cat#ABG2350, 1:2,000). Green, isotype control; red, ACSS2.