

KD-Validated Anti-ACTL6A Rabbit Polyclonal Antibody

Rabbit polyclonal antibody

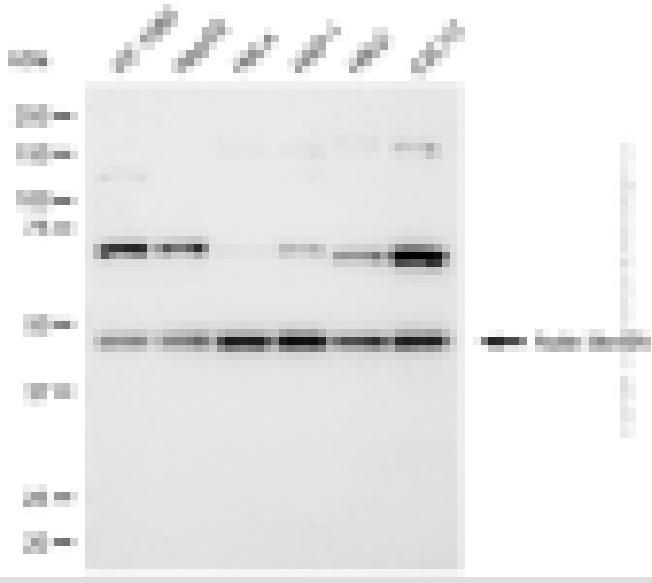
ABG2143

Product Overview

Name	KD-Validated Anti-ACTL6A Rabbit Polyclonal Antibody
Catalog #	ABG2143
Clonality	Polyclonal
Accession(Primary)	O96019
Application Note (Approx.)	WB1:2,500
Precautions	

Target information(O96019)

Synonyms**Gene ID****Other Names****Function****Cellular location****Note**



Western blotting analysis using anti-actin like 6A antibody (Cat#ABG2143). Total cell lysates (30 μ g) from various cell lines were loaded and separated by SDS-PAGE. The blot was incubated with anti-actin like 6A antibody (Cat#ABG2143, 1:2,500) and HRP-conjugated goat anti-rabbit secondary antibody respectively.



Western blotting analysis using anti-actin like 6A antibody (Cat #ABG2143). Actin like 6A expression in wild-type (WT) and actin like 6A (ACTL6A) shRNA knockdown (KD) HeLa cells with 10 μ g of total cell lysates. Hsp90 ? serves as a loading control. The blot was incubated with anti-actin like 6A antibody (Cat #ABG2143, 1:2,500) and HRP-conjugated goat anti-rabbit secondary antibody respectively.