

KD-Validated Anti-AKT1 Rabbit Monoclonal Antibody

Rabbit monoclonal antibody

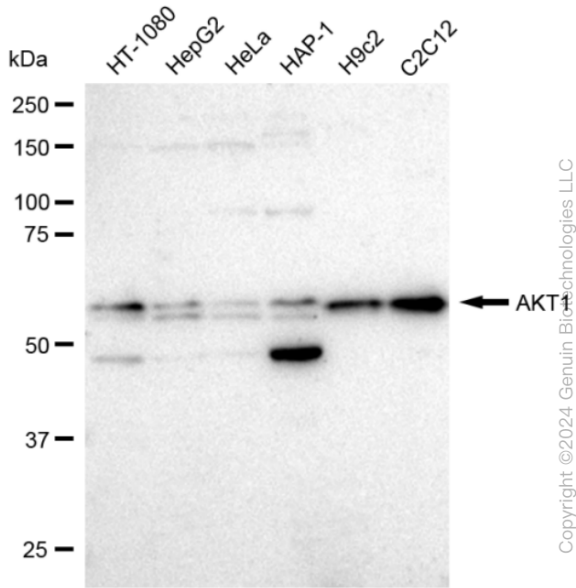
ABG2366

Product Overview

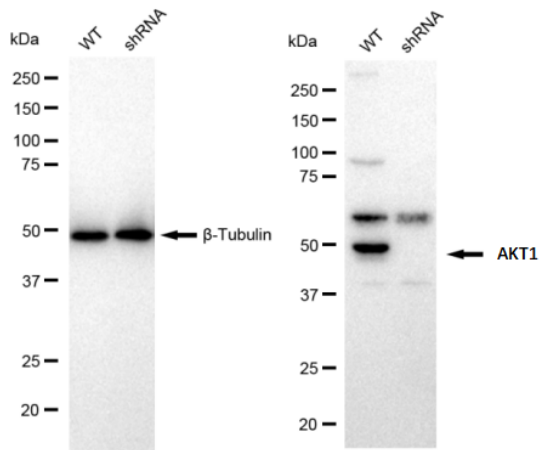
Name	KD-Validated Anti-AKT1 Rabbit Monoclonal Antibody
Accession(Primary)	P31749
Host Species	Rabbit
Clonality	Monoclonal
Isotype	Rabbit IgG
Immunogen	A synthesized peptide derived from human AKT1
Species Reactivity	Human, Mouse, Rat
Calculated MW	Predicted, 56 kDa ; Observed, 56 kDa
Storage Buffer	Supplied in PBS (pH 7.4) containing 50% glycerol, and 0.02% sodium azide.
Recommended Dilution	Western blotting (WB): 1:1,000-1:5,000 Flow cytometry (FCM): 1:2,000

Target information (P31749)

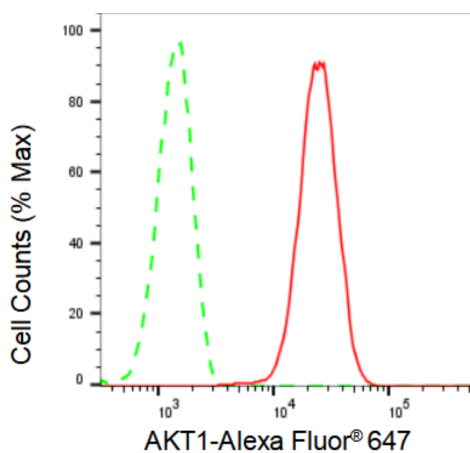
Gene Name	AKT1
About Gene Symbol	AKT1 (AKT Serine/Threonine Kinase 1) is a serine/threonine protein kinase involved in cell signaling and proliferation. It is an important research target in cancer research and is widely studied to elucidate cellular mechanisms and identify therapeutic targets.



Western blotting analysis using anti-AKT1 antibody (Cat#ABG2366). Total cell lysates (30 μ g) from various cell lines were loaded and separated by SDS-PAGE. The blot was incubated with anti-AKT1 antibody (Cat#ABG2366, 1:5,000) and HRP-conjugated goat anti-rabbit secondary antibody respectively.



Western blotting analysis using anti-AKT1 antibody (Cat#ABG2366). AKT1 expression in wild type (WT) and AKT1 shRNA knockdown (KD) HeLa cells with 30 μ g of total cell lysates. β -Tubulin serves as a loading control. The blot was incubated with anti-AKT1 antibody (Cat#ABG2366, 1:5,000) and HRP-conjugated goat anti-rabbit secondary antibody respectively.



Flow cytometric analysis of AKT1 expression in C2C12 cells using AKT1 antibody (Cat#ABG2366, 1:2,000). Green, isotype control; red, AKT1.