

KD-Validated Anti-AMBP Rabbit Monoclonal Antibody

Rabbit monoclonal antibody

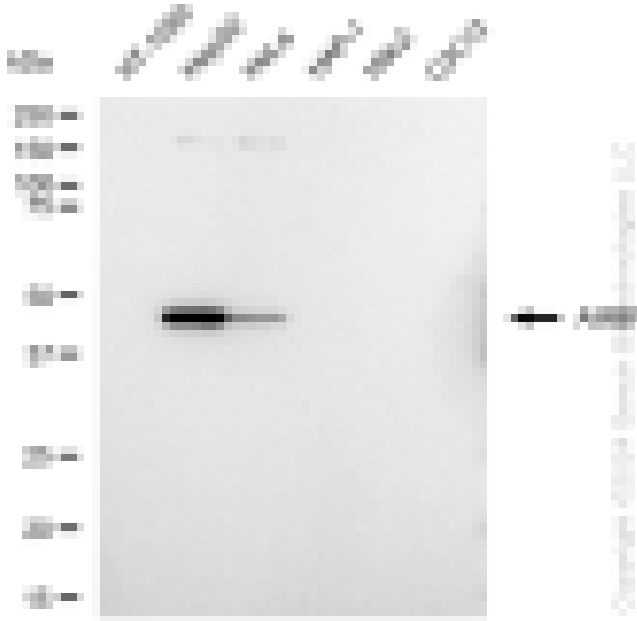
ABG1315

Product Overview

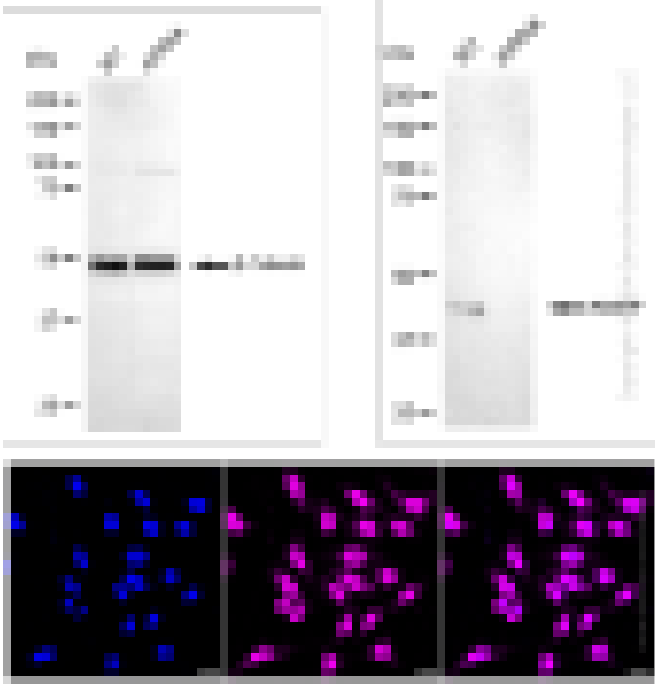
Name	KD-Validated Anti-AMBP Rabbit Monoclonal Antibody
Catalog #	ABG1315
Clonality	Monoclonal
Accession(Primary)	P02760
Application Note (Approx.)	WB1:5,000 ICC1:1,000
Precautions	

Target information(P02760)

Synonyms**Gene ID****Other Names****Function****Cellular location****Note**



Western blotting analysis using anti-AMBP antibody (Cat#ABG1315). Total cell lysates (30 µg) from various cell lines were loaded and separated by SDS-PAGE. The blot was incubated with anti-AMBP antibody (Cat#ABG1315, 1:5,000) and HRP-conjugated goat anti-rabbit secondary antibody respectively.



Western blotting analysis using anti-AMBP antibody (Cat#ABG1315). AMBP expression in wild type (WT) and AMBP shRNA knockdown (KD) HeLa cells with 30 μ g of total cell lysates. β -Tubulin serves as a loading control. The blot was incubated with anti-AMBP antibody (Cat#ABG1315, 1:5,000) and HRP-conjugated goat anti-rabbit secondary antibody respectively.

Immunocytochemical staining of HepG2 cells with AMBP antibody (Cat#ABG1315, 1:1,000). Nuclei were stained blue with DAPI; AMBP was stained magenta with Alexa Fluor® 647. Images were taken using Leica stellaris 5. Protein abundance based on laser Intensity and smart gain: Medium. Scale bar: 20 μ m.