

KD-Validated Anti-AP2S1 Rabbit Monoclonal Antibody

Rabbit monoclonal antibody

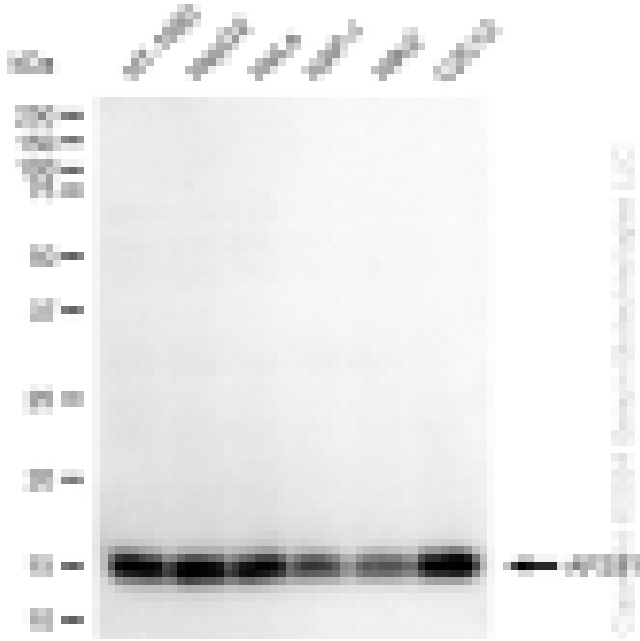
ABG1149

Product Overview

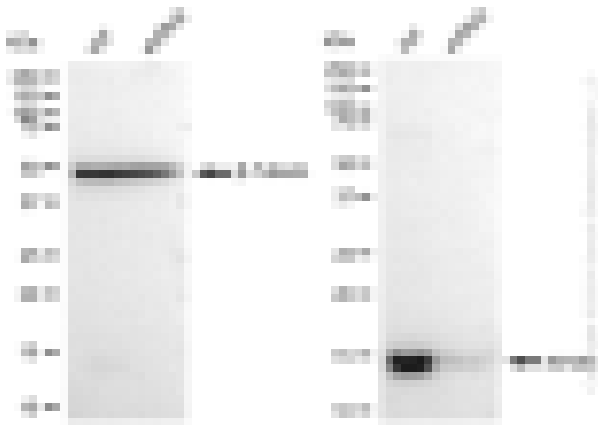
Name	KD-Validated Anti-AP2S1 Rabbit Monoclonal Antibody
Catalog #	ABG1149
Clonality	Monoclonal
Accession(Primary)	P53680
Application Note (Approx.)	WB1:5,000 FC1:2,000 ICC1:1,000
Precautions	

Target information(P53680)

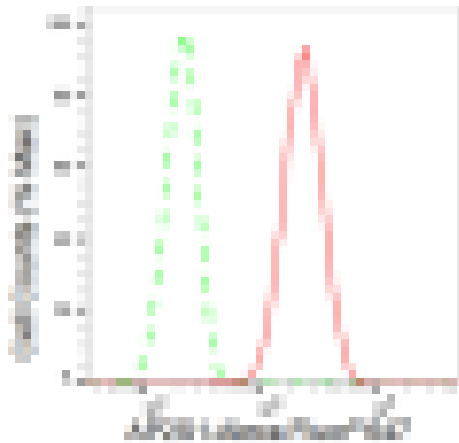
Synonyms**Gene ID****Other Names****Function****Cellular location****Note**



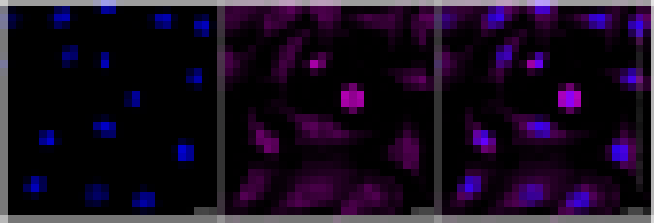
Western blotting analysis using anti-AP2S1 antibody (Cat#ABG1149). Total cell lysates (30 µg) from various cell lines were loaded and separated by SDS-PAGE. The blot was incubated with anti-AP2S1 antibody (Cat#ABG1149, 1:5,000) and HRP-conjugated goat anti-rabbit secondary antibody respectively.



Western blotting analysis using anti-AP2S1 antibody (Cat#ABG1149). AP2S1 expression in wild type (WT) and AP2S1 shRNA knockdown (KD) HeLa cells with 30 μ g of total cell lysates. β -Tubulin serves as a loading control. The blot was incubated with anti-AP2S1 antibody (Cat#ABG1149 1:5,000) and HRP-conjugated goat anti-rabbit secondary antibody respectively.



Flow cytometric analysis of AP2S1 expression in C2C12 cells using AP2S1 antibody (Cat#ABG1149, 1:2,000). Green, isotype control; red, AP2S1.



Immunocytochemical staining of C2C12 cells with AP2S1 antibody (Cat#ABG1149, 1:1,000). Nuclei were stained blue with DAPI; AP2S1 was stained magenta with Alexa Fluor® 647. Images were taken using Leica stellaris 5. Protein abundance based on laser Intensity and smart gain: Medium. Scale bar: 20 μ m.