

# KD-Validated Anti-APE1 Rabbit Monoclonal Antibody

*Rabbit monoclonal antibody*

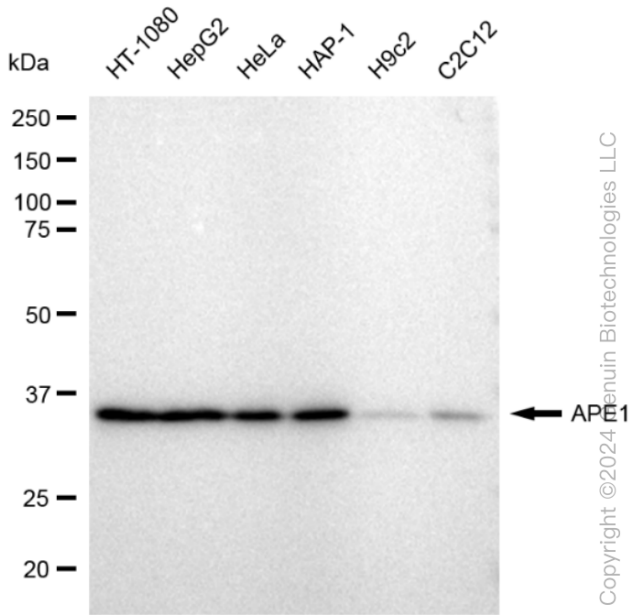
ABG1387

## Product Overview

<b>Name</b>	KD-Validated Anti-APE1 Rabbit Monoclonal Antibody
<b>Accession(Primary)</b>	P27695
<b>Host Species</b>	Rabbit
<b>Clonality</b>	Monoclonal
<b>Isotype</b>	Rabbit IgG
<b>Immunogen</b>	A synthesized peptide derived from human APE1
<b>Species Reactivity</b>	Human, Mouse, Rat
<b>Calculated MW</b>	Predicted, 36 kDa , observed, 36 kDa
<b>Storage Buffer</b>	Supplied in PBS (pH 7.4) containing 50% glycerol, and 0.02% sodium azide.
<b>Recommended Dilution</b>	Western Blotting (WB): 1:1,000-1:5,000 Flow Cytometry (FCM): 1:2,000

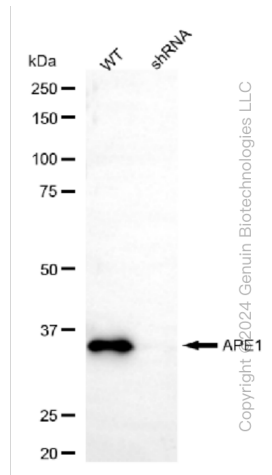
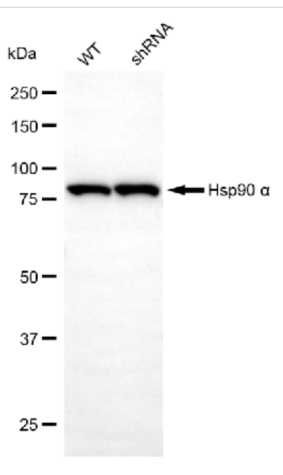
## Target information (P27695)

<b>Gene Name</b>	APEX1
<b>About Gene Symbol</b>	APEX1 (Apurinic/Apyrimidinic Endodeoxyribonuclease 1) is a metabolic enzyme involved in DNA damage response and repair. It is an important research target in metabolic disease, cancer metabolism, and drug discovery and is widely studied to elucidate cellu



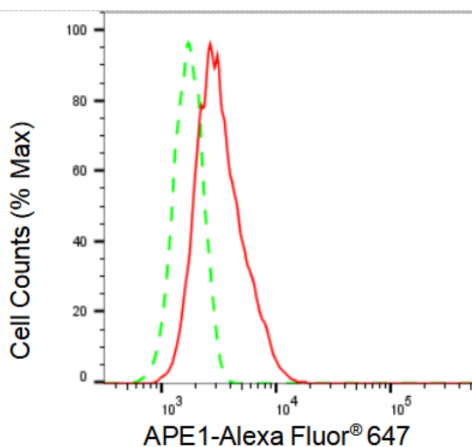
Copyright ©2024 Genuin Biotechnologies LLC

Western blotting analysis using anti-APE1 antibody (Cat#ABG1387). Total cell lysates (30 µg) from various cell lines were loaded and separated by SDS-PAGE. The blot was incubated with anti-APE1 antibody (Cat#ABG1387, 1:5,000) and HRP-conjugated goat anti-rabbit secondary antibody respectively.



Copyright ©2024 Genuin Biotechnologies LLC

Western blotting analysis using anti-APE1 antibody (Cat#ABG1387). APE1 expression in wild type (WT) and APE1 shRNA knockdown (KD) HeLa cells with 30 µg of total cell lysates. β-Tubulin serves as a loading control. The blot was incubated with anti-APE1 antibody (Cat#ABG1387, 1:5,000) and HRP-conjugated goat anti-rabbit secondary antibody respectively.



Copyright ©2024 Genuin Biotechnologies LLC

Flow cytometric analysis of APE1 expression in HT-1080 cells using APE1 antibody (Cat#ABG1387, 1:2,000). Green, isotype control; red, APE1.