

KD-Validated Anti-APPL1 Rabbit Monoclonal Antibody

Rabbit monoclonal antibody

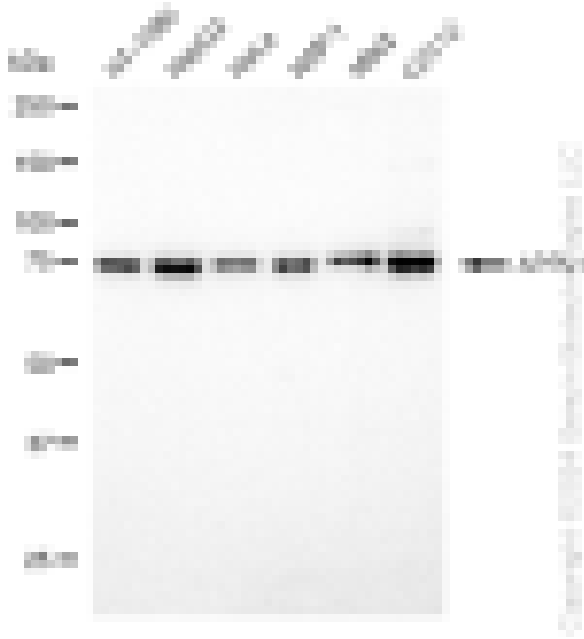
ABG1375

Product Overview

Name	KD-Validated Anti-APPL1 Rabbit Monoclonal Antibody
Catalog #	ABG1375
Clonality	Monoclonal
Accession(Primary)	Q9UKG1
Application Note (Approx.)	WB1:5,000 FC1:2,000 ICC1:1,000
Precautions	

Target information(Q9UKG1)

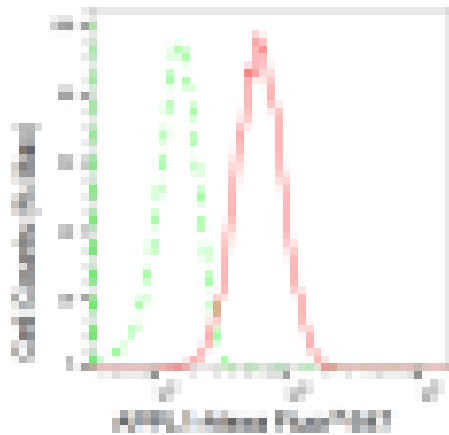
Synonyms**Gene ID****Other Names****Function****Cellular location****Note**



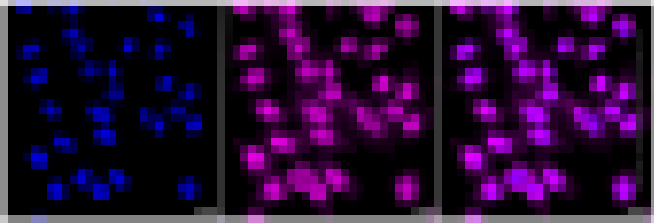
Western blotting analysis using anti-APPL1 antibody (Cat#ABG1375). Total cell lysates (30 µg) from various cell lines were loaded and separated by SDS-PAGE. The blot was incubated with anti-APPL1 antibody (Cat#ABG1375, 1:5,000) and HRP-conjugated goat anti-rabbit secondary antibody respectively.



Western blotting analysis using anti-APPL1 antibody (Cat#ABG1375). APPL1 expression in wild type (WT) and APPL1 shRNA knockdown (KD) HeLa cells with 30 μ g of total cell lysates. β -Tubulin serves as a loading control. The blot was incubated with anti-APPL1 antibody (Cat#ABG1375, 1:5,000) and HRP-conjugated goat anti-rabbit secondary antibody respectively.



Flow cytometric analysis of APPL1 expression in HepG2 cells using APPL1 antibody (Cat#ABG1375, 1:2,000). Green, isotype control; red, APPL1.



Immunocytochemical staining of HepG2 cells with APPL1 antibody (Cat#ABG1375, 1:1,000). Nuclei were stained blue with DAPI; APPL1 was stained magenta with Alexa Fluor® 647. Images were taken using Leica stellaris 5. Protein abundance based on laser Intensity and smart gain: High. Scale bar: 20 μ m.
