

KD-Validated Anti-Acetyl-CoA Carboxylase alpha Rabbit

Rabbit monoclonal antibody

ABG1536

Product Overview

Name	KD-Validated Anti-Acetyl-CoA carboxylase alpha Rabbit Monoclonal Antibody
Catalog #	ABG1536
Clonality	Monoclonal
Accession(Primary)	Q13085
Application Note (Approx.)	WB1:5,000 FC1:2,000 ICC1:1,000
Precautions	

Target information(Q13085)

Synonyms

Gene ID

Other Names

Function

Cellular location

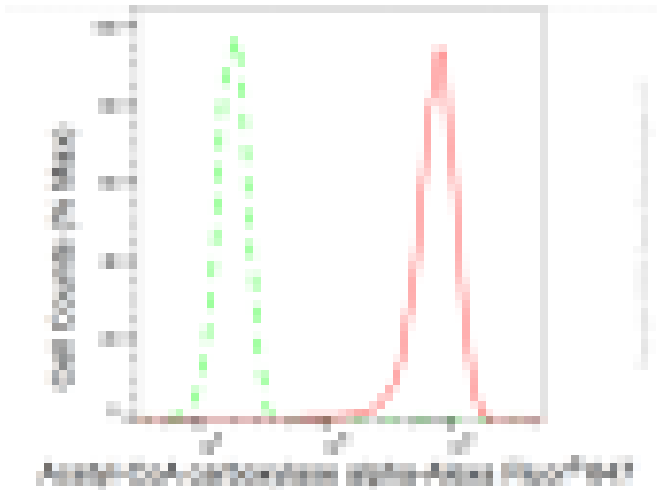
Note



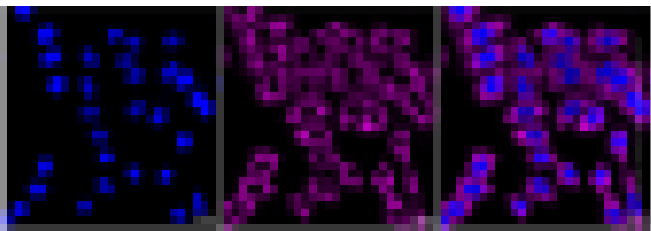
Western blotting analysis using anti-Acetyl-CoA carboxylase alpha antibody (Cat#ABG1536). Total cell lysates (30 μ g) from various cell lines were loaded and separated by SDS-PAGE. The blot was incubated with anti-Acetyl-CoA carboxylase alpha antibody (Cat#ABG1536, 1:5,000) and HRP-conjugated goat anti-rabbit secondary antibody respectively.



Western blotting analysis using anti-Acetyl-CoA carboxylase ? antibody (Cat#ABG1536). Acetyl-CoA carboxylase ? expression in wild type (WT) and Acetyl-CoA carboxylase ? shRNA knockdown (KD) HeLa cells with 20 μ g of total cell lysates. Hsp90 ? serves as a loading control. The blot was incubated with anti-Acetyl-CoA carboxylase ? antibody (Cat#ABG1536, 1:5,000) and HRP-conjugated goat anti-rabbit secondary antibody respectively.



Flow cytometric analysis of Acetyl-CoA carboxylase alpha expression in HepG2 cells using Acetyl-CoA carboxylase alpha antibody (Cat#ABG1536, 1:2,000). Green, isotype control; red, Acetyl-CoA carboxylase alpha.



Immunocytochemical staining of HepG2 cells with anti-Acetyl-CoA carboxylase alpha antibody (Cat#ABG1536, 1:1,000). Nuclei were stained blue with DAPI; Acetyl-CoA carboxylase alpha was stained magenta with Alexa Fluor® 647. Images were taken using Leica stellaris 5. Protein abundance based on laser Intensity and smart gain: Medium. Scale bar: 20 µm.