

# KD-Validated Anti-Actin like 6A Rabbit Monoclonal Antibody

*Rabbit monoclonal antibody*

ABG2348

## Product Overview

<b>Name</b>	KD-Validated Anti-Actin like 6A Rabbit Monoclonal Antibody
<b>Catalog #</b>	ABG2348
<b>Clonality</b>	Monoclonal
<b>Accession(Primary)</b>	O96019
<b>Application Note (Approx.)</b>	WB1:5,000 FC1:2,000 ICC1:1,000
<b>Precautions</b>	

## Target information(O96019)

Synonyms

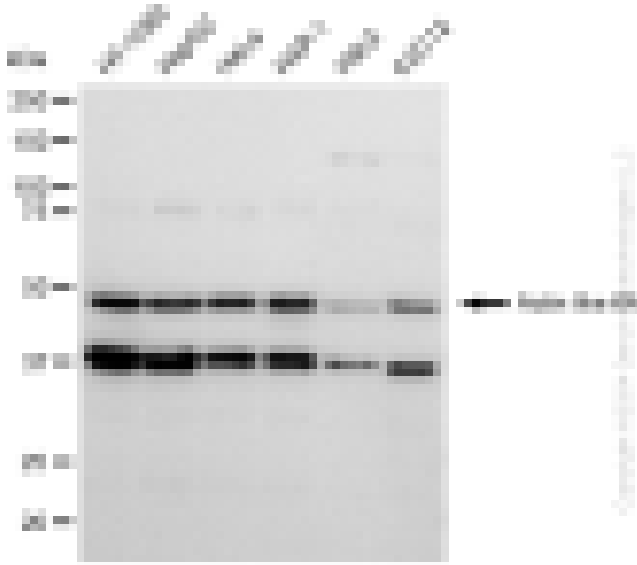
Gene ID

Other Names

Function

Cellular location

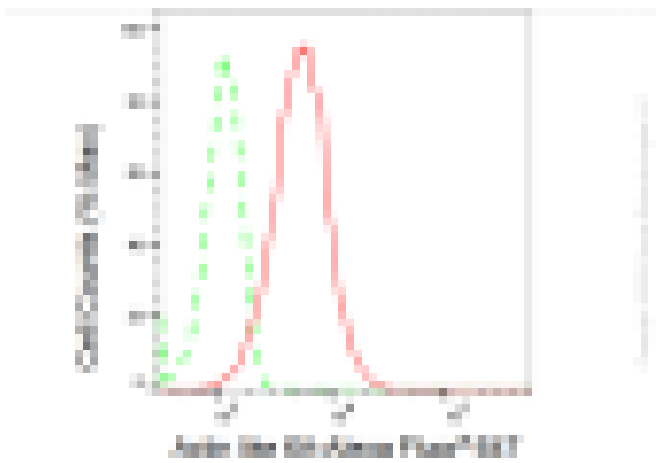
Note



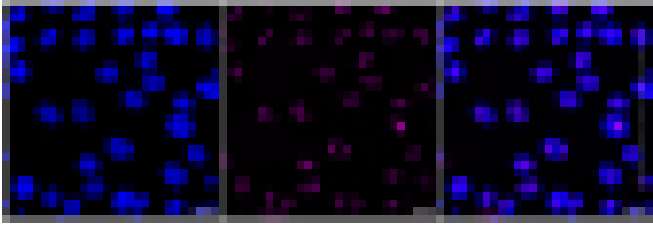
Western blotting analysis using anti-Actin like 6A antibody (Cat#ABG2348). Total cell lysates (30  $\mu$ g) from various cell lines were loaded and separated by SDS-PAGE. The blot was incubated with anti-Actin like 6A antibody (Cat#ABG2348, 1:5,000) and HRP-conjugated goat anti-rabbit secondary antibody respectively.



Western blotting analysis using anti-Actin like 6A antibody (Cat#ABG2348). Actin like 6A expression in wild type (WT) and actin like 6A shRNA knockdown (KD) HeLa cells with 30  $\mu$ g of total cell lysates.  $\beta$ -Tubulin serves as a loading control. The blot was incubated with anti-Actin like 6A antibody (Cat#ABG2348, 1:5,000) and HRP-conjugated goat anti-rabbit secondary antibody respectively.



Flow cytometric analysis of Actin like 6A expression in HepG2 cells using Actin like 6A antibody (Cat#ABG2348, 1:2,000). Green, isotype control; red, Actin like 6A.



Immunocytochemical staining of HT-1080 cells with Actin like 6A antibody (Cat#ABG2348, 1:1,000). Nuclei were stained blue with DAPI; Actin like 6A was stained magenta with Alexa Fluor® 647. Images were taken using Leica stellaris 5. Protein abundance based on laser Intensity and smart gain: Medium. Scale bar: 20  $\mu$ m.