

KD-Validated Anti-Activin A Receptor Like Type 1 Rabbit

Rabbit monoclonal antibody

ABG1331

Product Overview

Name	KD-Validated Anti-Activin A Receptor Like Type 1 Rabbit Monoclonal Antibody
Catalog #	ABG1331
Clonality	Monoclonal
Accession(Primary)	P37023
Application Note (Approx.)	WB1:5,000 ICC1:1,000
Precautions	

Target information(P37023)

Synonyms

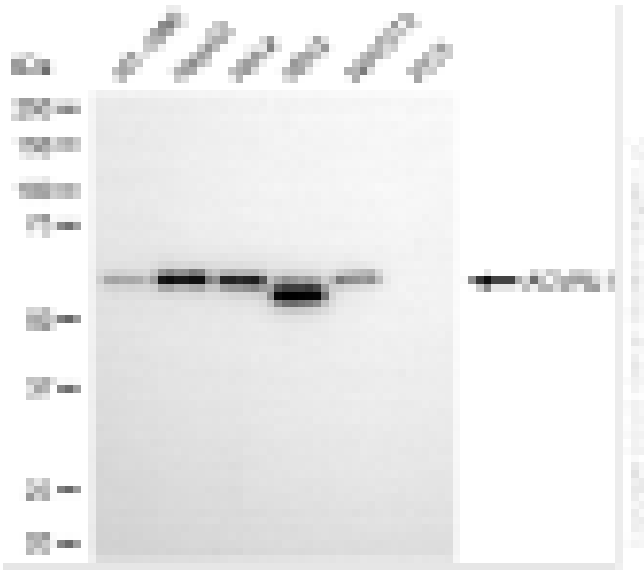
Gene ID

Other Names

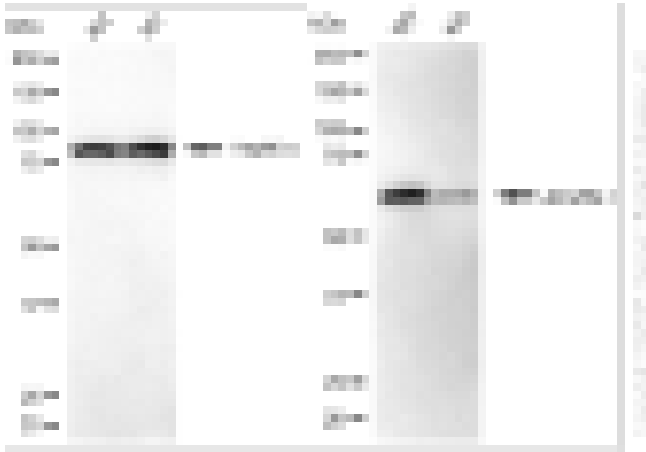
Function

Cellular location

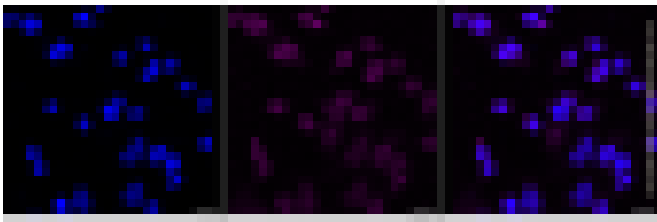
Note



Western blotting analysis using anti-ACVRL1 antibody (Cat#ABG1331). Total cell lysates (30 µg) from various cell lines were loaded and separated by SDS-PAGE. The blot was incubated with anti-ACVRL1 antibody (Cat#ABG1331, 1:5,000) and HRP-conjugated goat anti-rabbit secondary antibody respectively.



Western blotting analysis using anti-ACVRL1 antibody (Cat#ABG1331). ACVRL1 expression in wild type (WT) and ACVRL1 knockdown (KD) HSHC cells with 20 μ g of total cell lysates. Hsp90 α serves as a loading control. The blot was incubated with anti-ACVRL1 antibody (Cat#ABG1331, 1:5,000) and HRP-conjugated goat anti-rabbit secondary antibody respectively.



Immunocytochemical staining of HepG2 cells with anti-ACVRL1 antibody (Cat#ABG1331, 1:1,000). Nuclei were stained blue with DAPI; ACVRL1 was stained magenta with Alexa Fluor[®] 647. Images were taken using Leica stellaris 5. Protein abundance based on laser Intensity and smart gain: Low. Scale bar, 20 μ m.