

# KD-Validated Anti-Adenylate Kinase 1 Mouse Monoclonal Antibody

*Mouse monoclonal antibody*

ABG1790

## Product Overview

<b>Name</b>	KD-Validated Anti-Adenylate Kinase 1 Mouse Monoclonal Antibody
<b>Catalog #</b>	ABG1790
<b>Clonality</b>	Monoclonal
<b>Accession(Primary)</b>	P00568
<b>Application Note (Approx.)</b>	WB1:5,000 ICC1:1,000
<b>Precautions</b>	

## Target information(P00568)

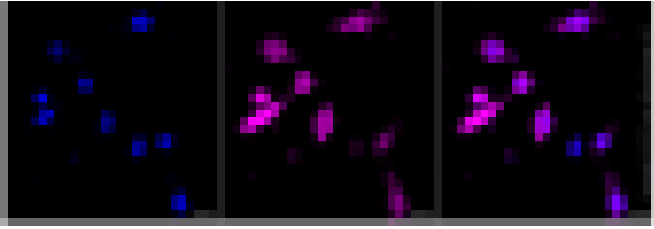
**Synonyms****Gene ID****Other Names****Function****Cellular location****Note**



Western blotting analysis using anti-Adenylate kinase 1 antibody (Cat#ABG1790). Total cell lysates (30  $\mu$ g) from various cell lines were loaded and separated by SDS-PAGE. The blot was incubated with anti-Adenylate kinase 1 antibody (Cat#ABG1790, 1:5,000) and HRP-conjugated goat anti-mouse secondary antibody respectively.



Western blotting analysis using anti-adenylate kinase 1 antibody (Cat#ABG1790). Adenylate kinase 1 expression in wild-type (WT) and adenylate kinase 1 (AK1) shRNA knockdown (KD) HeLa cells with 20  $\mu$ g of total cell lysates. Hsp90 ? serves as a loading control. The blot was incubated with anti-adenylate kinase 1 antibody (Cat#ABG1790, 1:5,000) and HRP-conjugated goat anti-mouse secondary antibody respectively.



Immunocytochemical staining of HepG2 cells with anti-Adenylate kinase 1 antibody(Cat#ABG1790, 1:1,000). Nuclei were stained blue with DAPI; Adenylate kinase 1 was stained magenta with Alexa Fluor® 647. Images were taken using Leica stellaris 5. Protein abundance based on laser Intensity and smart gain: Medium. Scale bar, 20  $\mu$ m.