

# KD-Validated Anti-Aminopeptidase A / CD249 Rabbit Monoclonal Antibody

Rabbit monoclonal antibody

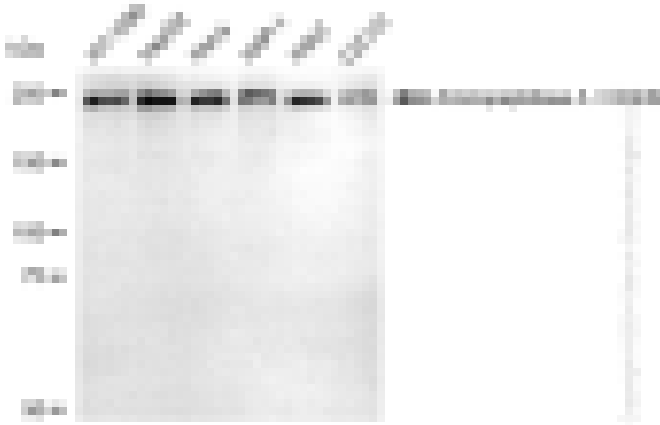
ABG1518

## Product Overview

<b>Name</b>	KD-Validated Anti-Aminopeptidase A / CD249 Rabbit Monoclonal Antibody
<b>Catalog #</b>	ABG1518
<b>Clonality</b>	Monoclonal
<b>Accession(Primary)</b>	Q07075
<b>Application Note (Approx.)</b>	WB1:5,000 ICC1:1,000
<b>Precautions</b>	

## Target information(Q07075)

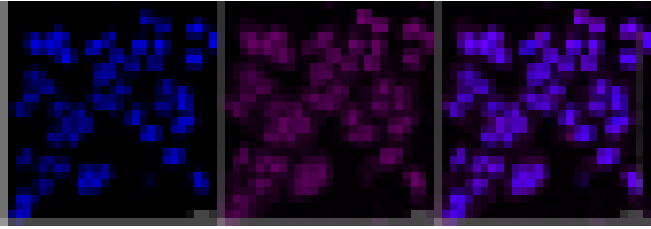
**Synonyms****Gene ID****Other Names****Function****Cellular location****Note**



Western blotting analysis using anti-Aminopeptidase A / CD249 antibody (Cat#ABG1518). Total cell lysates (30 µg) from various cell lines were loaded and separated by SDS-PAGE. The blot was incubated with anti-Aminopeptidase A / CD249 antibody (Cat#ABG1518, 1:5,000) and HRP-conjugated goat anti-rabbit secondary antibody respectively.



Western blotting analysis using anti-Aminopeptidase A / CD249 antibody (Cat#ABG1518). Aminopeptidase A / CD249 expression in wild type (WT) and Aminopeptidase A / CD249 shRNA knockdown (KD) HeLa cells with 30 µg of total cell lysates. Hsp90 serves as a loading control. The blot was incubated with anti-Aminopeptidase A / CD249 antibody (Cat#ABG1518, 1:5,000) and HRP-conjugated goat anti-rabbit secondary antibody respectively.



Immunocytochemical staining of HepG2 cells with anti-aminopeptidase A / CD249 antibody (Cat#ABG1518, 1:1,000). Nuclei were stained blue with DAPI; Aminopeptidase A / CD249 was stained magenta with Alexa Fluor® 647. Images were taken using Leica stellaris 5. Protein abundance based on laser Intensity and smart gain: Medium. Scale bar: 20  $\mu$ m.