

# KD-Validated Anti-Amyloid beta precursor protein Rabbit Monoclonal Antibody

*Rabbit monoclonal antibody*

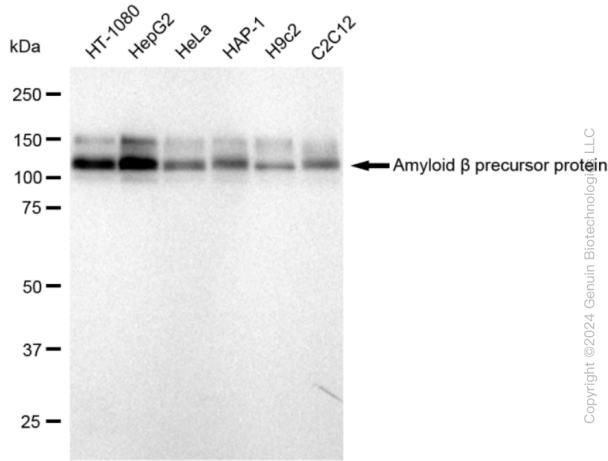
ABG2381

## Product Overview

<b>Name</b>	KD-Validated Anti-Amyloid beta precursor protein Rabbit Monoclonal Antibody
<b>Accession(Primary)</b>	P05067
<b>Host Species</b>	Rabbit
<b>Clonality</b>	Monoclonal
<b>Isotype</b>	Rabbit IgG
<b>Immunogen</b>	A synthesized peptide derived from human Amyloid beta A4
<b>Species Reactivity</b>	Human, Mouse, Rat
<b>Calculated MW</b>	Predicted, 87 kDa; Observed, 110 kDa
<b>Storage Buffer</b>	Supplied in PBS (pH 7.4) containing 50% glycerol, and 0.02% sodium azide.
<b>Recommended Dilution</b>	Western blotting (WB): 1:1,000-1:5,000 Flow Cytometry(FCM): 1:2,000 Immunocytochemistry (IC): 1:1,000

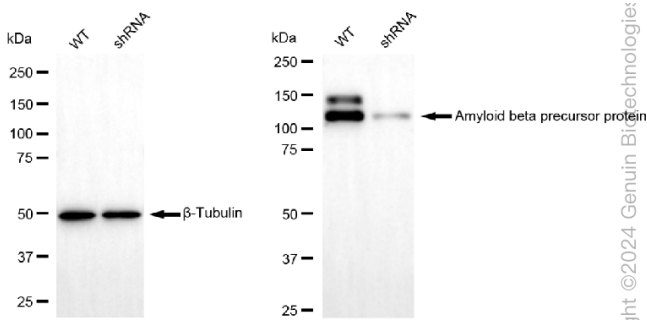
## Target information (P05067)

<b>Gene Name</b>	APP
<b>About Gene Symbol</b>	APP (AID(50)) is a cell surface marker involved in cell surface signaling. It is an important research target in immunology, flow cytometry, and cancer immunotherapy and is widely studied to elucidate cellular mechanisms and identify therapeutic targets.



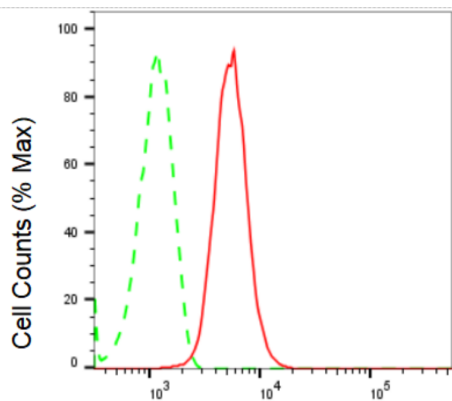
Copyright ©2024 Genuin Biotechnologies, LLC

Western blotting analysis using anti-Amyloid beta precursor protein antibody (Cat#ABG2381). Total cell lysates (30 µg) from various cell lines were loaded and separated by SDS-PAGE. The blot was incubated with anti-Amyloid beta precursor protein antibody (Cat#ABG2381, 1:5,000) and HRP-conjugated goat anti-rabbit secondary antibody respectively.



Copyright ©2024 Genuin Biotechnologies, LLC

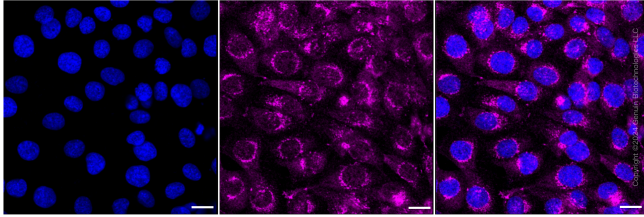
Western blotting analysis using anti-Amyloid beta precursor protein antibody (Cat#ABG2381). Amyloid beta precursor protein expression in wild type (WT) and amyloid beta precursor protein shRNA knockdown (KD) HeLa cells with 30 µg of total cell lysates. β-Tubulin serves as a loading control. The blot was incubated with anti-Amyloid beta precursor protein antibody (Cat#ABG2381, 1:5,000) and HRP-conjugated goat anti-rabbit secondary antibody respectively.



Copyright ©2024 Genuin Biotechnologies, LLC

Flow cytometric analysis of Amyloid beta precursor protein expression in HepG2 cells using Amyloid beta precursor protein antibody (Cat#ABG2381, 1:2,000). Green, isotype control; red, Amyloid beta precursor protein.

Amyloid beta precursor protein-Alexa Fluor® 647



Immunocytochemical staining of HT-1080 cells with Amyloid beta precursor protein antibody (Cat#ABG2381, 1:1,000). Nuclei were stained blue with DAPI; Amyloid beta precursor protein was stained magenta with Alexa Fluor® 647. Images were taken using Leica stellaris 5. Protein abundance based on laser Intensity and smart gain: Medium. Scale bar: 20  $\mu$ m.