

# KD-Validated Anti-Androgen receptor Rabbit Monoclonal Antibody

Rabbit monoclonal antibody

ABG1162

## Product Overview

<b>Name</b>	KD-Validated Anti-Androgen receptor Rabbit Monoclonal Antibody
<b>Catalog #</b>	ABG1162
<b>Clonality</b>	Monoclonal
<b>Accession(Primary)</b>	P10275
<b>Application Note (Approx.)</b>	WB1:5,000 ICC1:1,000
<b>Precautions</b>	

## Target information(P10275)

Synonyms

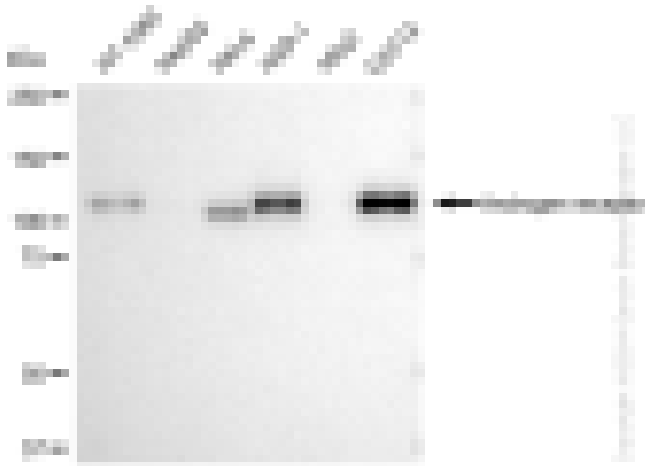
Gene ID

Other Names

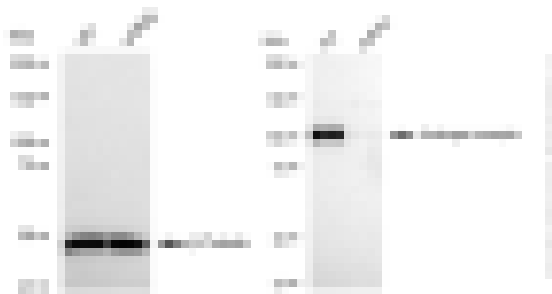
Function

Cellular location

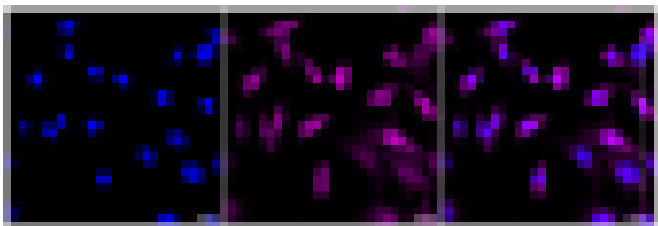
Note



Western blotting analysis using anti-Androgen receptor antibody (Cat#ABG1162). Total cell lysates (30  $\mu$ g) from various cell lines were loaded and separated by SDS-PAGE. The blot was incubated with anti-Androgen receptor antibody (Cat#ABG1162, 1:5,000) and HRP-conjugated goat anti-rabbit secondary antibody respectively.



Western blotting analysis using anti-Androgen receptor antibody (Cat#ABG1162). Androgen receptor expression in wild type (WT) and Androgen receptor shRNA knockdown (KD) HeLa cells with 30  $\mu$ g of total cell lysates.  $\beta$ -Tubulin serves as a loading control. The blot was incubated with anti-Androgen receptor antibody (Cat#ABG1162, 1:5,000) and HRP-conjugated goat anti-rabbit secondary antibody respectively.



Immunocytochemical staining of C2C12 cells with Androgen receptor antibody (Cat#ABG1162, 1:1,000). Nuclei were stained blue with DAPI; Androgen receptor was stained magenta with Alexa Fluor® 647. Images were taken using Leica stellaris 5. Protein abundance based on laser Intensity and smart gain: Low. Scale bar: 20 µm.

---