

KD-Validated Anti-Annexin A1 Rabbit Monoclonal Antibody

Rabbit monoclonal antibody

ABG1975

Product Overview

Name	KD-Validated Anti-Annexin A1 Rabbit Monoclonal Antibody
Catalog #	ABG1975
Clonality	Monoclonal
Accession(Primary)	P04083
Application Note (Approx.)	WB1:5,000 FC1:2,000 ICC1:1,000
Precautions	

Target information(P04083)

Synonyms

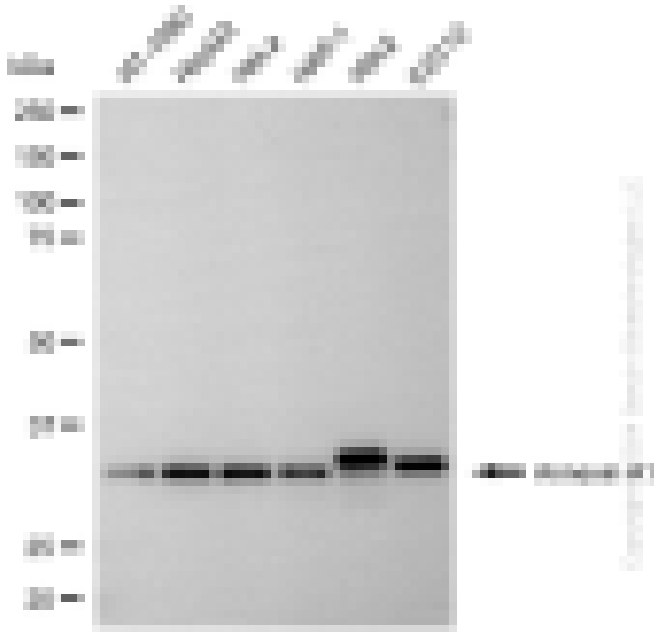
Gene ID

Other Names

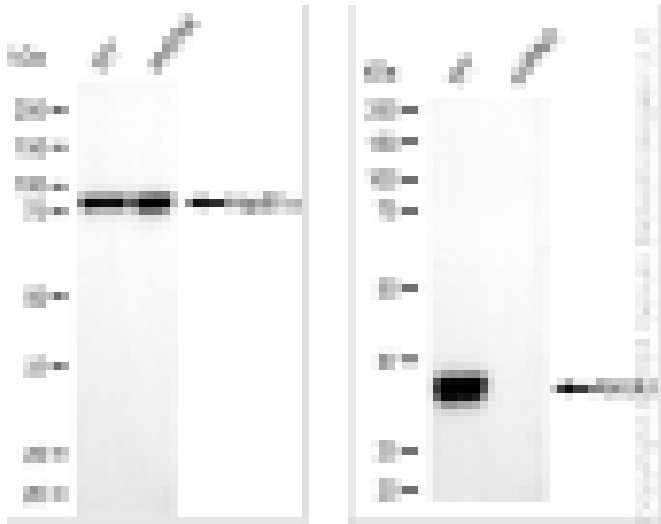
Function

Cellular location

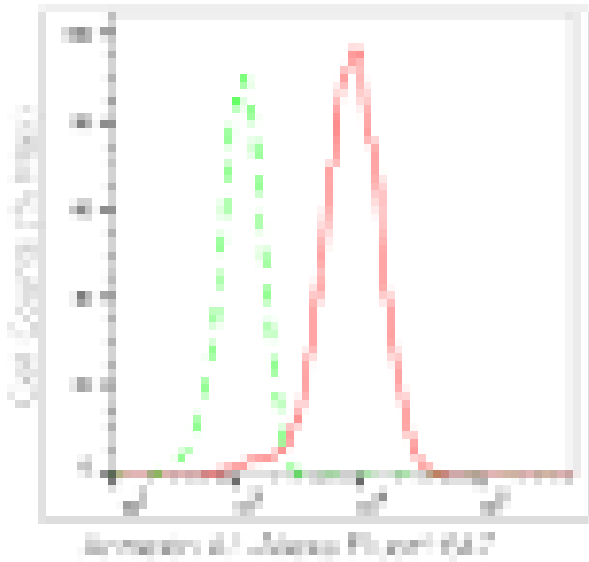
Note



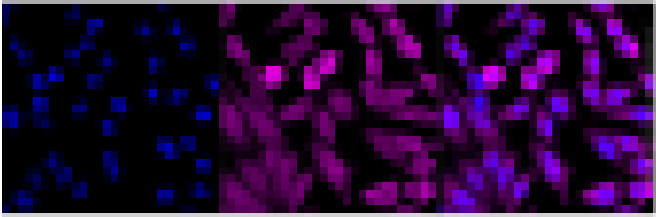
Western blotting analysis using anti-annexin A1 antibody (Cat#ABG1975). Total cell lysates (10 µg) from various cell lines were loaded and separated by SDS-PAGE. The blot was incubated with anti-annexin A1 antibody (Cat#ABG1975, 1:5,000) and HRP-conjugated goat anti-rabbit secondary antibody respectively.



Western blotting analysis using anti-annexin A1 antibody (Cat#ABG1975). Annexin A1 expression in wild-type (WT) and annexin A1 (ANXA1) shRNA knockdown (KD) HeLa cells with 20 µg of total cell lysates. Hsp90 serves as a loading control. The blot was incubated with anti-annexin A1 antibody (Cat#ABG1975, 1:5,000) and HRP-conjugated goat anti-rabbit secondary antibody respectively.



Flow cytometric analysis of Annexin A1 expression in HepG2 cells using anti-Annexin A1 antibody (Cat#ABG1975, 1:2,000). Green, isotype control; red, Annexin A1.



Immunocytochemical staining of HepG2 cells with anti-Annexin A1 antibody (Cat#ABG1975, 1:1,000). Nuclei were stained blue with DAPI; Annexin A1 was stained magenta with Alexa Fluor® 647. Images were taken using Leica stellaris 5. Protein abundance based on laser Intensity and smart gain: High. Scale bar, 20 μ m.
