

KD-Validated Anti-Aquaporin 1 Rabbit Monoclonal Antibody

Rabbit monoclonal antibody

ABG2334

Product Overview

Name	KD-Validated Anti-Aquaporin 1 Rabbit Monoclonal Antibody
Catalog #	ABG2334
Clonality	Monoclonal
Accession(Primary)	P29972
Application Note (Approx.)	WB1:5,000 FC1:2,000 ICC1:1,000
Precautions	

Target information(P29972)

Synonyms

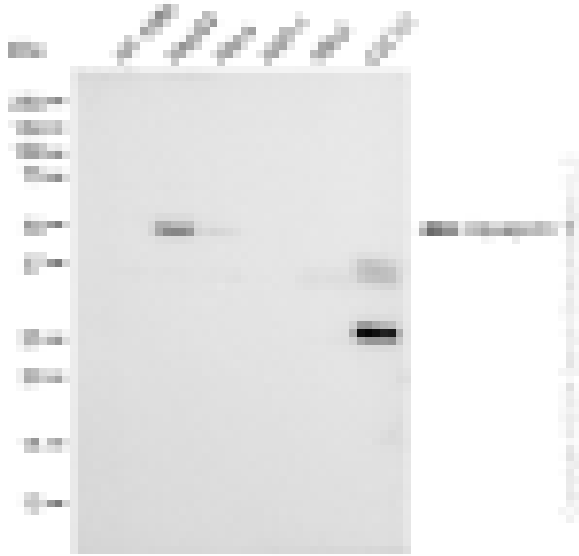
Gene ID

Other Names

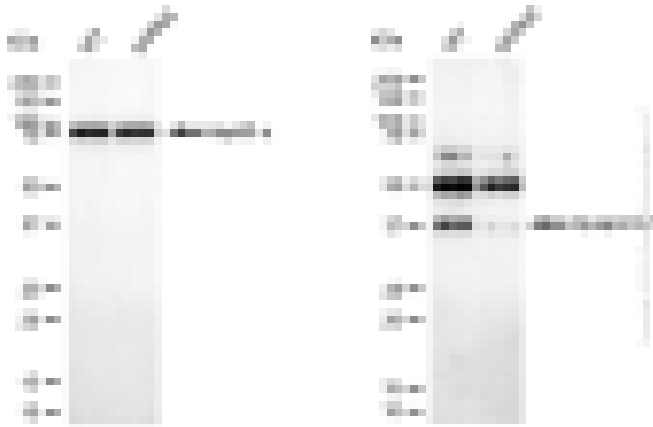
Function

Cellular location

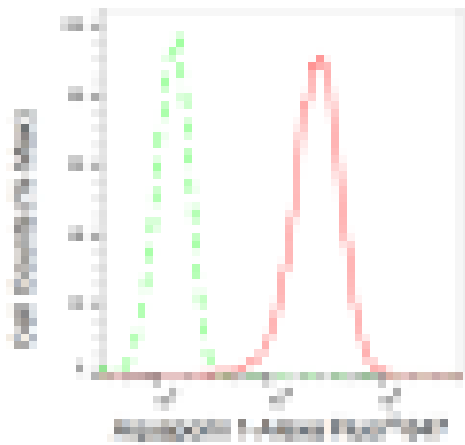
Note



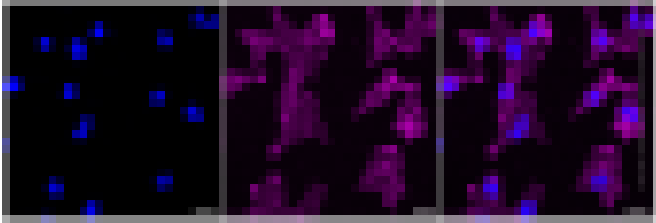
Western blotting analysis using anti-Aquaporin 1 antibody (Cat#ABG2334). Total cell lysates (30 μ g) from various cell lines were loaded and separated by SDS-PAGE. The blot was incubated with anti-Aquaporin 1 antibody (Cat#ABG2334, 1:5,000) and HRP-conjugated goat anti-rabbit secondary antibody respectively.



Western blotting analysis using anti-Aquaporin 1 antibody (Cat#ABG2334). Aquaporin 1 expression in wild type (WT) and aquaporin 1 shRNA knockdown (KD) HeLa cells with 30 μ g of total cell lysates. β -Tubulin serves as a loading control. The blot was incubated with anti-Aquaporin 1 antibody (Cat#ABG2334, 1:5,000) and HRP-conjugated goat anti-rabbit secondary antibody respectively.



Flow cytometric analysis of Aquaporin 1 expression in C2C12 cells using Aquaporin 1 antibody (Cat#ABG2334, 1:2,000). Green, isotype control; red, Aquaporin 1.



Immunocytochemical staining of C2C12 cells with Aquaporin 1 antibody (Cat#ABG2334, 1:1,000). Nuclei were stained blue with DAPI; Aquaporin 1 was stained magenta with Alexa Fluor® 647. Images were taken using Leica stellaris 5. Protein abundance based on laser Intensity and smart gain: Medium. Scale bar: 20 μm .
