

# KD-Validated Anti-B cell receptor associated protein 31

Rabbit monoclonal antibody

ABG1221

## Product Overview

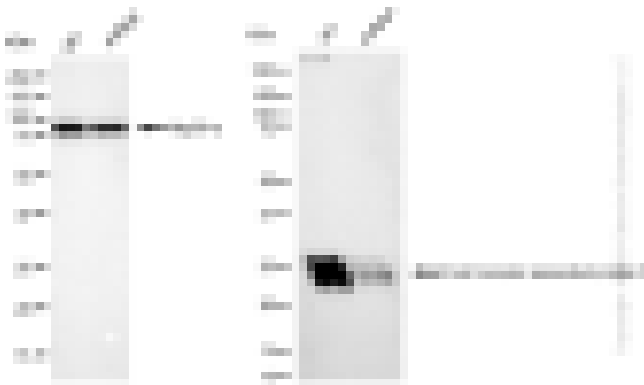
<b>Name</b>	KD-Validated Anti-B cell receptor associated protein 31 Rabbit Monoclonal Antibody
<b>Catalog #</b>	ABG1221
<b>Clonality</b>	Monoclonal
<b>Accession(Primary)</b>	P51572
<b>Application Note (Approx.)</b>	WB1:5,000 FC1:2,000 ICC1:1,000
<b>Precautions</b>	

## Target information(P51572)

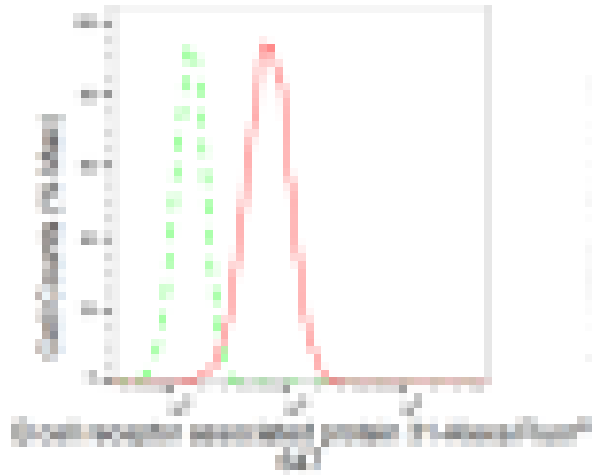
**Synonyms****Gene ID****Other Names****Function****Cellular location****Note**



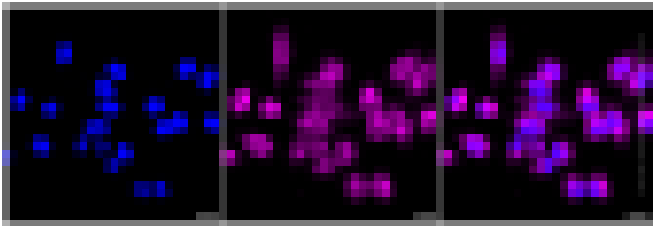
Western blotting analysis using anti-B cell receptor associated protein 31 antibody (Cat#ABG1221). Total cell lysates (30  $\mu$ g) from various cell lines were loaded and separated by SDS-PAGE. The blot was incubated with anti-B cell receptor associated protein 31 antibody (Cat#ABG1221, 1:5,000) and HRP-conjugated goat anti-rabbit secondary antibody respectively.



Western blotting analysis using anti-B cell receptor associated protein 31 antibody (Cat#ABG1221). B cell receptor associated protein 31 expression in wild type (WT) and B cell receptor associated protein 31 shRNA knockdown (KD) HeLa cells with 30  $\mu$ g of total cell lysates.  $\beta$ -Tubulin serves as a loading control. The blot was incubated with anti-B cell receptor associated protein 31 antibody (Cat#ABG1221, 1:5,000) and HRP-conjugated goat anti-rabbit secondary antibody respectively.



Flow cytometric analysis of B cell receptor associated protein 31 expression in HepG2 cells using B cell receptor associated protein 31 antibody (Cat#ABG1221, 1:2,000). Green, isotype control; red, B cell receptor associated protein 31.



Immunocytochemical staining of HepG2 cells with B cell receptor associated protein 31 antibody (Cat#ABG1221, 1:1,000). Nuclei were stained blue with DAPI; B cell receptor associated protein 31 was stained magenta with Alexa Fluor® 647. Images were taken using Leica stellaris 5. Protein abundance based on laser Intensity and smart gain: Medium. Scale bar: 20  $\mu$ m.