

KD-Validated Anti-BCAM Rabbit Monoclonal Antibody

Rabbit monoclonal Antibody

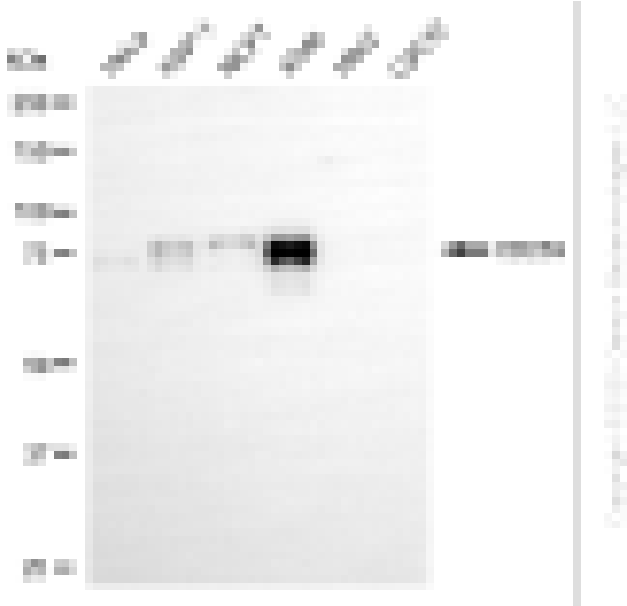
ABG2216

Product Overview

Name	KD-Validated Anti-BCAM Rabbit Monoclonal Antibody
Catalog #	ABG2216
Clonality	Monoclonal
Accession(Primary)	P50895
Application Note (Approx.)	WB1:5,000
Precautions	

Target information(P50895)

Synonyms**Gene ID****Other Names****Function****Cellular location****Note**



Western blotting analysis using anti-CD239 antibody (Cat#ABG2216). Total cell lysates (30 µg) from various cell lines were loaded and separated by SDS-PAGE. The blot was incubated with anti-CD239 antibody (Cat#ABG2216, 1:5,000) and HRP-conjugated goat anti-rabbit secondary antibody respectively.



Western blotting analysis using anti-CD239 antibody (Cat#ABG2216). CD239 expression in wild-type (WT) and BCAM shRNA knockdown (KD) HeLa cells with 20 μ g of total cell lysates. Hsp90 serves as a loading control. The blot was incubated with anti-CD239 antibody (Cat#ABG2216, 1:5,000) and HRP-conjugated goat anti-rabbit secondary antibody respectively.