

# KD-Validated Anti-BMAL1 Mouse Monoclonal Antibody

*Mouse monoclonal antibody*

ABG1900

## Product Overview

<b>Name</b>	KD-Validated Anti-BMAL1 Mouse Monoclonal Antibody
<b>Catalog #</b>	ABG1900
<b>Clonality</b>	Monoclonal
<b>Accession(Primary)</b>	O00327
<b>Application Note (Approx.)</b>	WB1:2,500 FC1:2,000
<b>Precautions</b>	

## Target information(O00327)

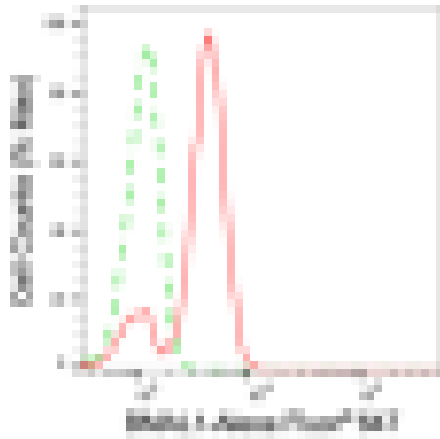
**Synonyms****Gene ID****Other Names****Function****Cellular location****Note**



Western blotting analysis using anti-BMAL1 antibody (Cat#ABG1900). Total cell lysates (30 µg) from various cell lines were loaded and separated by SDS-PAGE. The blot was incubated with anti-BMAL1 antibody (Cat#ABG1900, 1:2,500) and HRP-conjugated goat anti-mouse secondary antibody respectively.



Western blotting analysis using anti-BMAL1 antibody (Cat#ABG1900). BMAL1 expression in wild type (WT) and BMAL1 shRNA knockdown (KD) HeLa cells with 30 µg of total cell lysates. Hsp90 serves as a loading control. The blot was incubated with anti-BMAL1 antibody (Cat#ABG1900, 1:2,500) and HRP-conjugated goat anti-mouse secondary antibody respectively.



Flow cytometric analysis of BMAL1 expression in C2C12 cells using anti-BMAL1 antibody (Cat#ABG1900, 1:2,000). Green, isotype control; red, BMAL1.