

# KD-Validated Anti-Bone morphogenetic protein 6 Rabbit Monoclonal Antibody

*Rabbit monoclonal antibody*

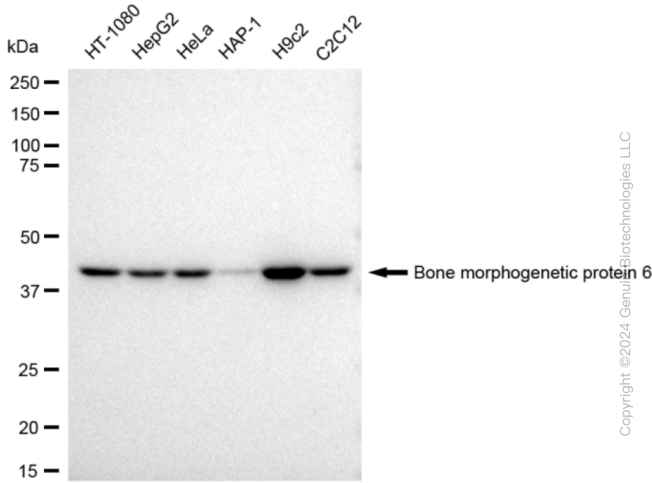
ABG2332

## Product Overview

<b>Name</b>	KD-Validated Anti-Bone morphogenetic protein 6 Rabbit Monoclonal Antibody
<b>Accession(Primary)</b>	P22004
<b>Host Species</b>	Rabbit
<b>Clonality</b>	Monoclonal
<b>Isotype</b>	Rabbit IgG
<b>Immunogen</b>	A synthesized peptide derived from human BMP6
<b>Species Reactivity</b>	Human, Mouse, Rat
<b>Calculated MW</b>	Predicted, 57 kDa ; Observed, 42 kDa
<b>Storage Buffer</b>	Supplied in PBS (pH 7.4) containing 50% glycerol, and 0.02% sodium azide.
<b>Recommended Dilution</b>	Western blotting (WB): 1:1,000-1:5,000 Flow cytometry (FCM): 1:2,000 Immunocytochemistry (IC): 1:1,000

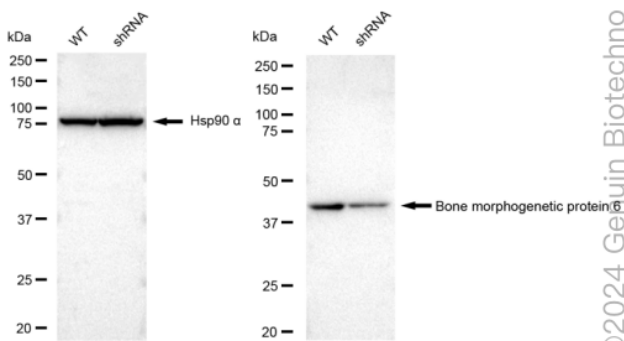
## Target information (P22004)

<b>Gene Name</b>	BMP6
<b>About Gene Symbol</b>	BMP6 (Bone Morphogenetic Protein 6) is a cytokine and immune signaling protein involved in TGF- $\beta$ signaling. It is an important research target in bone biology and is widely studied to elucidate cellular mechanisms and identify therapeutic targets.



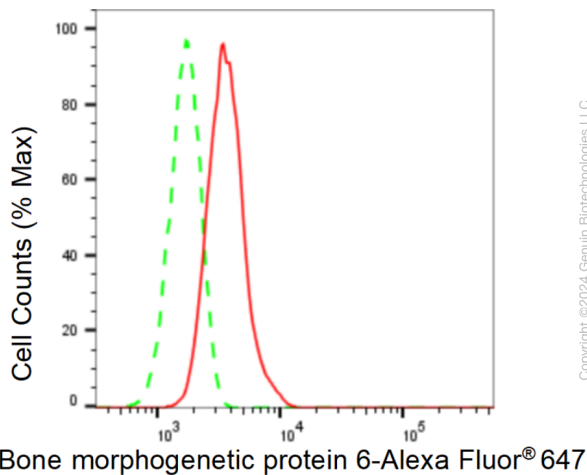
Copyright ©2024 Genuin Biotechnologies LLC

Western blotting analysis using anti-Bone morphogenetic protein 6 antibody (Cat#ABG2332). Total cell lysates (30 µg) from various cell lines were loaded and separated by SDS-PAGE. The blot was incubated with anti-Bone morphogenetic protein 6 antibody (Cat#ABG2332, 1:5,000) and HRP-conjugated goat anti-rabbit secondary antibody respectively.



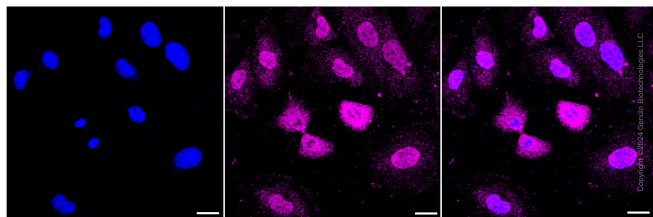
©2024 Genuin Biotechno

Western blotting analysis using anti-Bone morphogenetic protein 6 antibody (Cat#ABG2332). Bone morphogenetic protein 6 expression in wild type (WT) and Bone morphogenetic protein 6 shRNA knockdown (KD) HeLa cells with 30 µg of total cell lysates. Hsp90 α serves as a loading control. The blot was incubated with anti-Bone morphogenetic protein 6 antibody (Cat#ABG2332, 1:5,000) and HRP-conjugated goat anti-rabbit secondary antibody respectively.



Copyright ©2024 Genuin Biotechnologies LLC

Flow cytometric analysis of Bone morphogenetic protein 6 expression in H9c2 cells using Bone morphogenetic protein 6 antibody (Cat#ABG2332, 1:2,000). Green, isotype control; red, Bone morphogenetic protein 6.



Immunocytochemical staining of H9c2 cells with Bone morphogenetic protein 6 antibody (Cat#ABG2332, 1:1,000). Nuclei were stained blue with DAPI; Bone morphogenetic protein 6 was stained magenta with Alexa Fluor® 647. Images were taken using Leica stellaris 5. Protein abundance based on laser Intensity and smart gain: Medium. Scale bar: 20  $\mu$ m.