

# KD-Validated Anti-CD105 Rabbit Monoclonal Antibody

*Rabbit monoclonal antibody*

ABG1227

## Product Overview

<b>Name</b>	KD-Validated Anti-CD105 Rabbit Monoclonal Antibody	
<b>Catalog #</b>	ABG1227	
<b>Clonality</b>	Monoclonal	
<b>Accession(Primary)</b>	P17813	
<b>Application Note (Approx.)</b>	WB1:5,000	ICC1:1,000
<b>Precautions</b>		

## Target information(P17813)

Synonyms

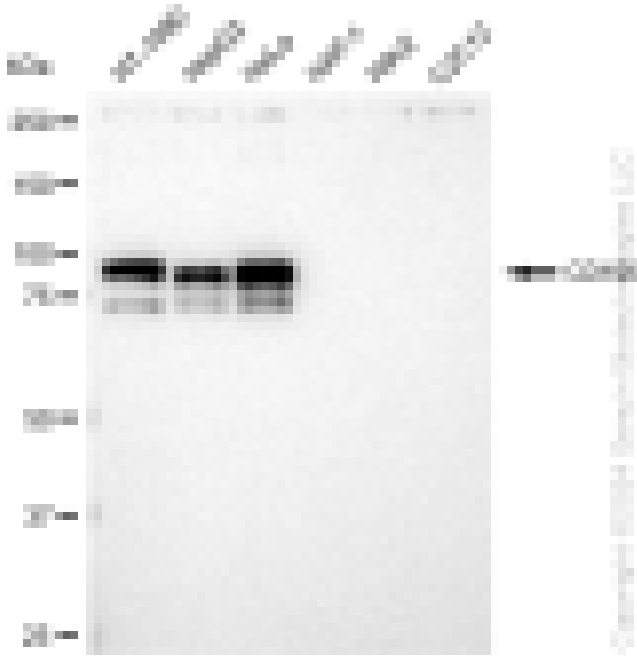
Gene ID

Other Names

Function

Cellular location

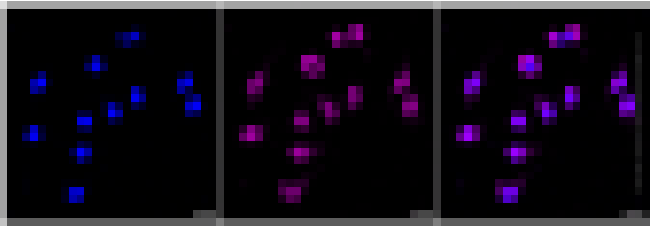
Note



Western blotting analysis using anti-CD105 antibody (Cat#ABG1227). Total cell lysates (30 µg) from various cell lines were loaded and separated by SDS-PAGE. The blot was incubated with anti-CD105 antibody (Cat#ABG1227, 1:5,000) and HRP-conjugated goat anti-rabbit secondary antibody respectively.



Western blotting analysis using anti-CD105 antibody (Cat#ABG1227). CD105 expression in wild type (WT) and CD105 shRNA knockdown (KD) HeLa cells with 30  $\mu$ g of total cell lysates.  $\beta$ -Tubulin serves as a loading control. The blot was incubated with anti-CD105 antibody (Cat#ABG1227, 1:5,000) and HRP-conjugated goat anti-rabbit secondary antibody respectively.



Immunocytochemical staining of HeLa cells with CD105 antibody (Cat#ABG1227, 1:1,000). Nuclei were stained blue with DAPI; CD105 was stained magenta with Alexa Fluor® 647. Images were taken using Leica stellaris 5. Protein abundance based on laser Intensity and smart gain: Low. Scale bar: 20  $\mu$ m.