

KD-Validated Anti-CD146 Rabbit Monoclonal Antibody

Rabbit monoclonal antibody

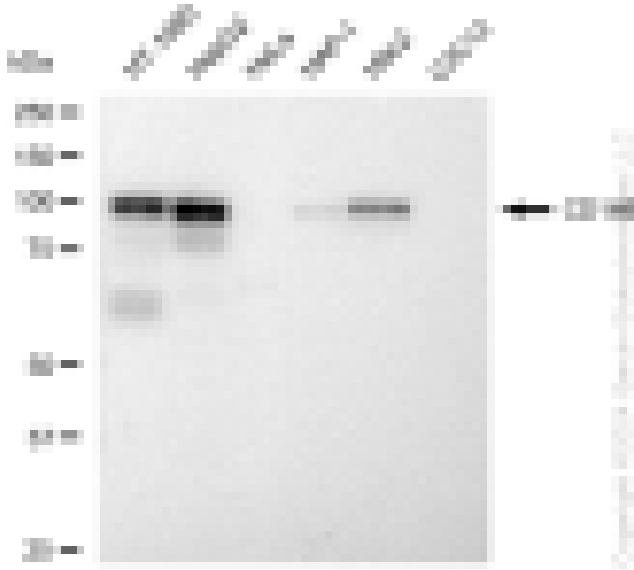
ABG1255

Product Overview

Name	KD-Validated Anti-CD146 Rabbit Monoclonal Antibody
Catalog #	ABG1255
Clonality	Monoclonal
Accession(Primary)	P43121
Application Note (Approx.)	WB1:5,000 FC1:2,000 ICC1:1,000
Precautions	

Target information(P43121)

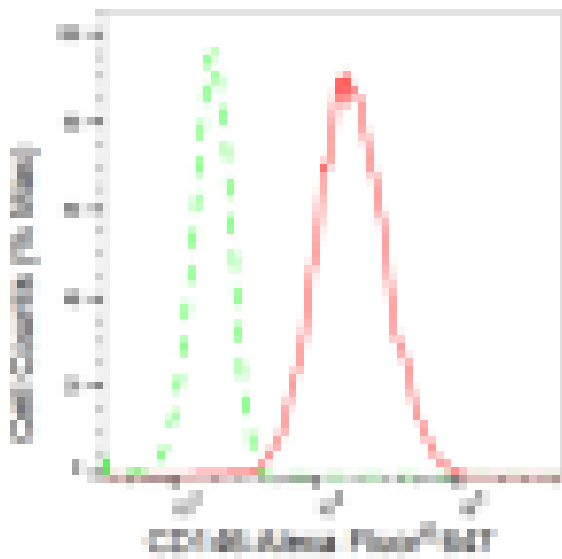
Synonyms**Gene ID****Other Names****Function****Cellular location****Note**



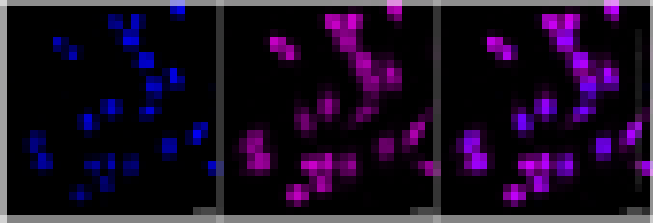
Western blotting analysis using anti-CD146 antibody (Cat#ABG1255). Total cell lysates (30 µg) from various cell lines were loaded and separated by SDS-PAGE. The blot was incubated with anti-CD146 antibody (Cat#ABG1255, 1:5,000) and HRP-conjugated goat anti-rabbit secondary antibody respectively.



Western blotting analysis using anti-CD146 antibody (Cat#ABG1255). CD146 expression in wild type (WT) and CD146 shRNA knockdown (KD) HeLa cells with 30 μ g of total cell lysates. β -Tubulin serves as a loading control. The blot was incubated with anti-CD146 antibody (Cat#ABG1255, 1:5,000) and HRP-conjugated goat anti-rabbit secondary antibody respectively.



Flow cytometric analysis of CD146 expression in HepG2 cells using CD146 antibody (Cat#ABG1255, 1:2,000). Green, isotype control; red, CD146.



Immunocytochemical staining of HepG2 cells with CD146 antibody (Cat#ABG1255, 1:1,000). Nuclei were stained blue with DAPI; CD146 was stained magenta with Alexa Fluor® 647. Images were taken using Leica stellaris 5. Protein abundance based on laser Intensity and smart gain: Medium. Scale bar: 20 μ m.
