

# KD-Validated Anti-CDT1 Rabbit Monoclonal Antibody

*Rabbit monoclonal antibody*

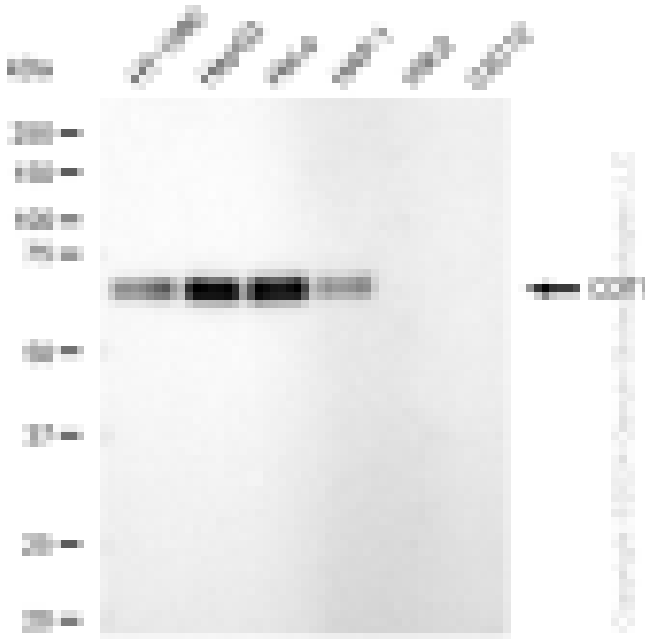
ABG1540

## Product Overview

<b>Name</b>	KD-Validated Anti-CDT1 Rabbit Monoclonal Antibody
<b>Catalog #</b>	ABG1540
<b>Clonality</b>	Monoclonal
<b>Accession(Primary)</b>	Q9H211
<b>Application Note (Approx.)</b>	WB1:5,000
<b>Precautions</b>	

## Target information(Q9H211)

**Synonyms****Gene ID****Other Names****Function****Cellular location****Note**



Western blotting analysis using anti-CDT1 antibody (Cat#ABG1540). Total cell lysates (30 µg) from various cell lines were loaded and separated by SDS-PAGE. The blot was incubated with anti-CDT1 antibody (Cat#ABG1540, 1:5,000) and HRP-conjugated goat anti-rabbit secondary antibody respectively.



Western blotting analysis using anti-CDT1 antibody (Cat#ABG1540). CDT1 expression in wild type (WT) and CDT1 shRNA knockdown (KD) HeLa cells with 30  $\mu$ g of total cell lysates. Hsp90 serves as a loading control. The blot was incubated with anti-CDT1 antibody (Cat#ABG1540, 1:5,000) and HRP-conjugated goat anti-rabbit secondary antibody respectively.