

KD-Validated Anti-CHMP2B Rabbit Monoclonal Antibody

Rabbit monoclonal antibody

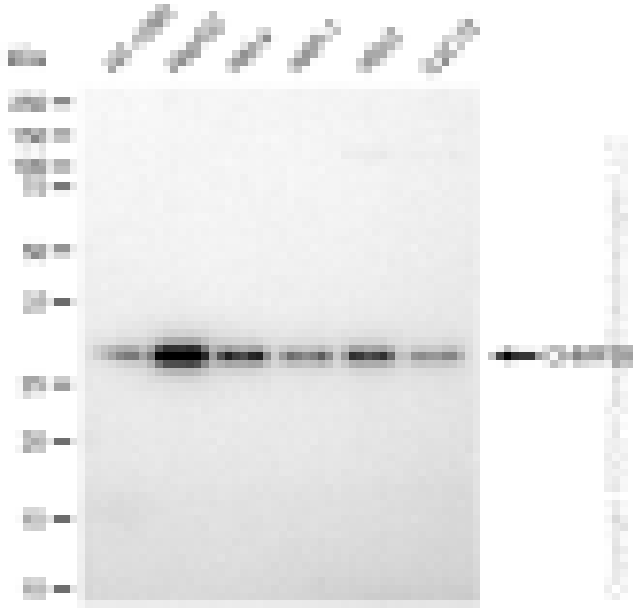
ABG1146

Product Overview

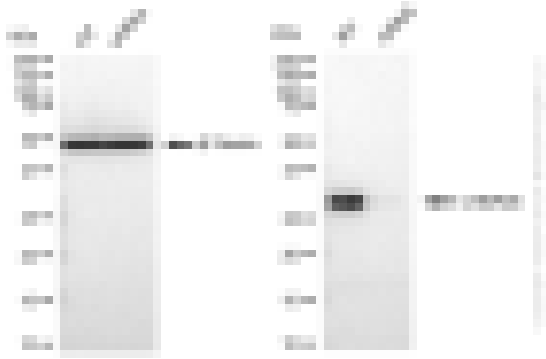
Name	KD-Validated Anti-CHMP2B Rabbit Monoclonal Antibody
Catalog #	ABG1146
Clonality	Monoclonal
Accession(Primary)	Q9UQN3
Application Note (Approx.)	WB1:5,000 FC1:2,000 ICC1:1,000
Precautions	

Target information(Q9UQN3)

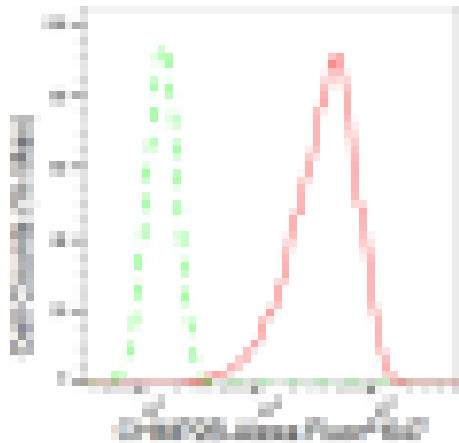
Synonyms**Gene ID****Other Names****Function****Cellular location****Note**



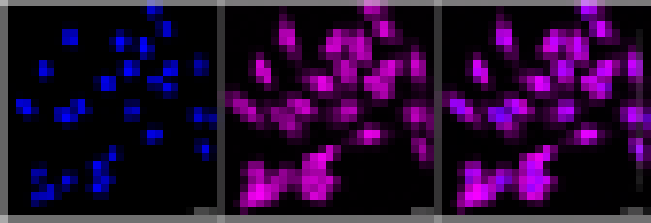
Western blotting analysis using anti-CHMP2B antibody (Cat#ABG1146). Total cell lysates (30 µg) from various cell lines were loaded and separated by SDS-PAGE. The blot was incubated with anti-CHMP2B antibody (Cat#ABG1146, 1:5,000) and HRP-conjugated goat anti-rabbit secondary antibody respectively.



Western blotting analysis using anti-CHMP2B antibody (Cat#ABG1146). CHMP2B expression in wild type (WT) and CHMP2B shRNA knockdown (KD) HeLa cells with 30 μ g of total cell lysates. β -Tubulin serves as a loading control. The blot was incubated with anti-CHMP2B antibody (Cat#ABG1146, 1:5,000) and HRP-conjugated goat anti-rabbit secondary antibody respectively.



Flow cytometric analysis of CHMP2B expression in HepG2 cells using CHMP2B antibody (Cat#ABG1146, 1:2,000). Green, isotype control; red, CHMP2B.



Immunocytochemical staining of HepG2 cells with CHMP2B antibody (Cat#ABG1146, 1:1,000). Nuclei were stained blue with DAPI; CHMP2B was stained magenta with Alexa Fluor® 647. Images were taken using Leica stellaris 5. Protein abundance based on laser Intensity and smart gain: Medium. Scale bar: 20 μ m.
