

KD-Validated Anti-CLIC4 Rabbit Polyclonal Antibody

Rabbit polyclonal antibody

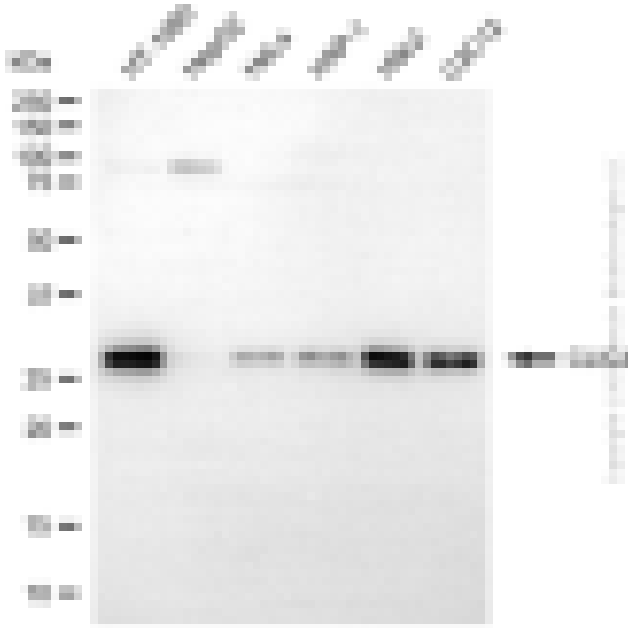
ABG2147

Product Overview

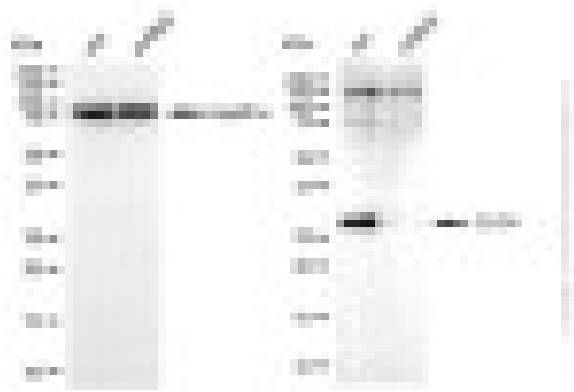
| | |
|-----------------------------------|--|
| Name | KD-Validated Anti-CLIC4 Rabbit Polyclonal Antibody |
| Catalog # | ABG2147 |
| Clonality | Polyclonal |
| Accession(Primary) | Q9Y696 |
| Application Note (Approx.) | WB1:1,000 |
| Precautions | |

Target information(Q9Y696)

Synonyms**Gene ID****Other Names****Function****Cellular location****Note**



Western blotting analysis using anti-CLIC4 antibody (Cat#ABG2147). Total cell lysates (30 µg) from various cell lines were loaded and separated by SDS-PAGE. The blot was incubated with anti-CLIC4 antibody (Cat#ABG2147, 1:2,500) and HRP-conjugated goat anti-rabbit secondary antibody respectively.



Western blotting analysis using anti-CLIC4 antibody (Cat #ABG2147). CLIC4 expression in wild-type (WT) and CLIC4 shRNA knockdown (KD) HeLa cells with 30 μ g of total cell lysates. Hsp90 serves as a loading control. The blot was incubated with anti-CLIC4 antibody (Cat #ABG2147, 1:1,000) and HRP-conjugated goat anti-rabbit secondary antibody respectively.