

KD-Validated Anti-CRLF3 Mouse Monoclonal Antibody

Mouse monoclonal antibody

ABG2022

Product Overview

Name	KD-Validated Anti-CRLF3 Mouse Monoclonal Antibody
Catalog #	ABG2022
Clonality	Monoclonal
Accession(Primary)	Q8IUI8
Application Note (Approx.)	WB1:1,000 FC1:2,000
Precautions	

Target information(Q8IUI8)

Synonyms

Gene ID

Other Names

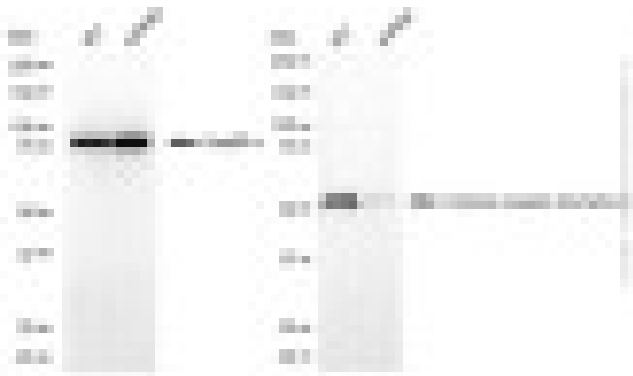
Function

Cellular location

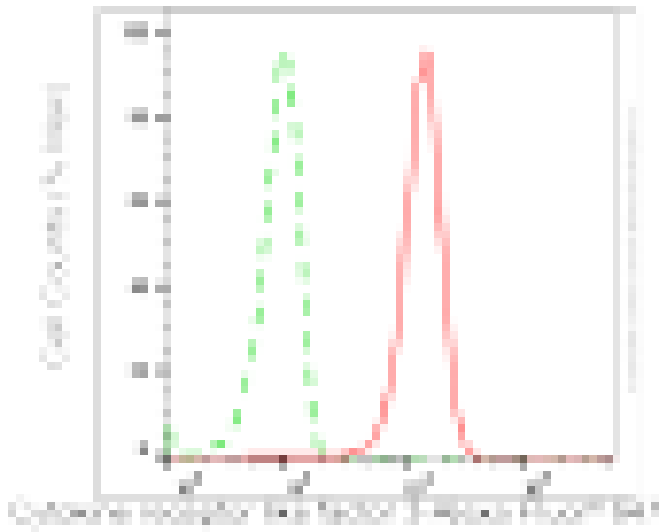
Note



Western blotting analysis using anti-cytokine receptor like factor 3 antibody (Cat#ABG2022). Total cell lysates (30 μ g) from various cell lines were loaded and separated by SDS-PAGE. The blot was incubated with anti-cytokine receptor like factor 3 antibody (Cat#ABG2022, 1:1,000) and HRP-conjugated goat anti-mouse secondary antibody respectively.



Western blotting analysis using anti-cytokine receptor like factor 3 antibody (Cat#ABG2022). Cytokine receptor like factor 3 expression in wild-type (WT) and cytokine receptor like factor 3 (CRLF3) shRNA knockdown (KD) HeLa cells with 20 μ g of total cell lysates. Hsp90 α serves as a loading control. The blot was incubated with anti-cytokine receptor like factor 3 antibody (Cat#ABG2022, 1:1,000) and HRP-conjugated goat anti-mouse secondary antibody respectively.



Flow cytometric analysis of Cytokine receptor like factor 3 expression in HepG2 cells using anti-Cytokine receptor like factor 3 antibody (Cat#ABG2022, 1:2,000). Green, isotype control; red, Cytokine receptor like factor 3.