

KD-Validated Anti-Chromodomain helicase DNA binding 4

Rabbit monoclonal antibody

ABG1145

Product Overview

Name	KD-Validated Anti-Chromodomain helicase DNA binding 4 Rabbit Monoclonal Antibody
Catalog #	ABG1145
Clonality	Monoclonal
Accession(Primary)	Q14839
Application Note (Approx.)	WB1:5,000 FC1:2,000 ICC1:1,000
Precautions	

Target information(Q14839)

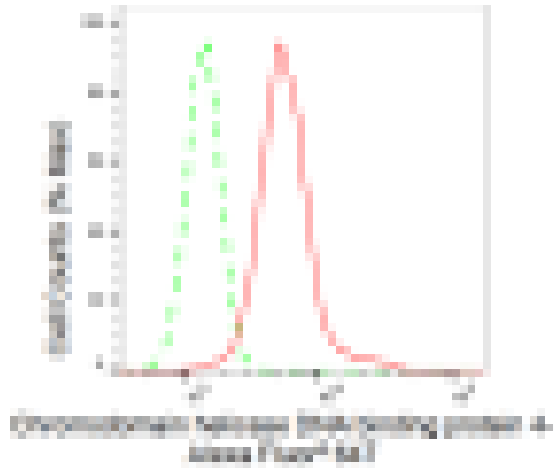
Synonyms**Gene ID****Other Names****Function****Cellular location****Note**



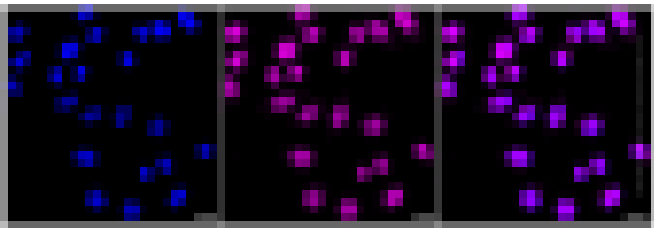
Western blotting analysis using anti-Chromodomain helicase DNA binding protein 4 antibody (Cat#ABG1145). Total cell lysates (30 μ g) from various cell lines were loaded and separated by SDS-PAGE. The blot was incubated with anti-Chromodomain helicase DNA binding protein 4 antibody (Cat#ABG1145, 1:5,000) and HRP-conjugated goat anti-rabbit secondary antibody respectively.



Western blotting analysis using anti-Chromodomain helicase DNA binding protein 4 antibody (Cat#ABG1145). Chromodomain helicase DNA binding protein 4 expression in wild type (WT) and Chromodomain helicase DNA binding protein 4 shRNA knockdown (KD) HeLa cells with 30 μ g of total cell lysates. Hsp90 α serves as a loading control. The blot was incubated with anti-Chromodomain helicase DNA binding protein 4 antibody (Cat#ABG1145, 1:5,000) and HRP-conjugated goat anti-rabbit secondary antibody respectively.



Flow cytometric analysis of Chromodomain helicase DNA binding protein 4 expression in HepG2 cells using Chromodomain helicase DNA binding protein 4 antibody (Cat#ABG1145, 1:2,000). Green, isotype control; red, Chromodomain helicase DNA binding protein 4.



Immunocytochemical staining of HepG2 cells with Chromodomain helicase DNA binding protein 4 antibody (Cat#ABG1145, 1:1,000). Nuclei were stained blue with DAPI; Chromodomain helicase DNA binding protein 4 was stained magenta with Alexa Fluor® 647. Images were taken using Leica stellaris 5. Protein abundance based on laser Intensity and smart gain: High. Scale bar: 20 μ m.