

KD-Validated Anti-IFIH1 Rabbit Monoclonal Antibody

Rabbit monoclonal antibody

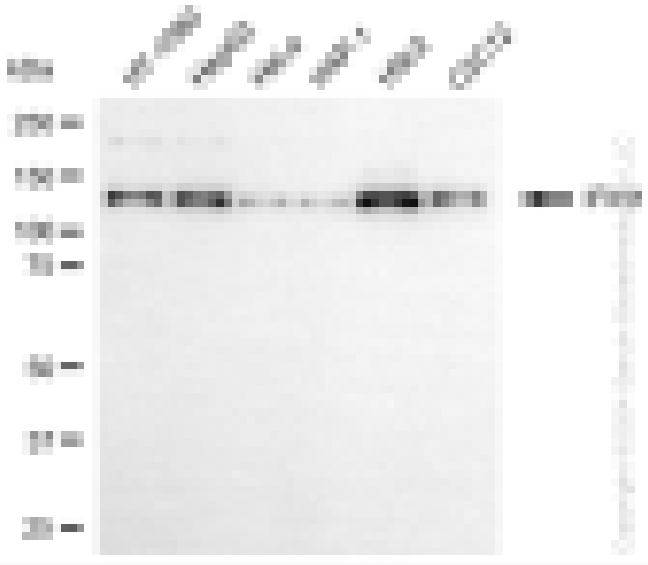
ABG1058

Product Overview

Name	KD-Validated Anti-IFIH1 Rabbit Monoclonal Antibody	
Catalog #	ABG1058	
Clonality	Monoclonal	
Accession(Primary)	Q9BYX4	
Application Note (Approx.)	WB1:5,000	ICC1:1,000
Precautions		

Target information(Q9BYX4)

Synonyms**Gene ID****Other Names****Function****Cellular location****Note**



Western blotting analysis using anti-IFIH1 antibody (Cat#ABG1058). Total cell lysates (30 µg) from various cell lines were loaded and separated by SDS-PAGE. The blot was incubated with anti-IFIH1 antibody (Cat#ABG1058, 1:5,000) and HRP-conjugated goat anti-rabbit secondary antibody respectively.



Western blotting analysis using anti-IFIH1 antibody (Cat#ABG1058). IFIH1 expression in wild type (WT) and IFIH1 shRNA knockdown (KD) HT-1080 cells with 20 μ g of total cell lysates. β -Tubulin serves as a loading control. The blot was incubated with anti-IFIH1 antibody (Cat#ABG1058, 1:5,000) and HRP-conjugated goat anti-rabbit secondary antibody respectively.



Immunocytochemical staining of HepG2 cells with anti-IFIH1 antibody (Cat#ABG1058, 1:1,000). Nuclei were stained blue with DAPI; IFIH1 was stained magenta with Alexa Fluor® 647. Images were taken using Leica stellaris 5. Protein abundance based on laser Intensity and smart gain: Medium. Scale bar: 20 μ m.