

KD-Validated Anti-ISG15 Rabbit Monoclonal Antibody

Rabbit monoclonal antibody

ABG1567

Product Overview

Name	KD-Validated Anti-ISG15 Rabbit Monoclonal Antibody	
Catalog #	ABG1567	
Clonality	Monoclonal	
Accession(Primary)	P05161	
Application Note (Approx.)	WB1:5,000	ICC1:1,000
Precautions		

Target information(P05161)

Synonyms

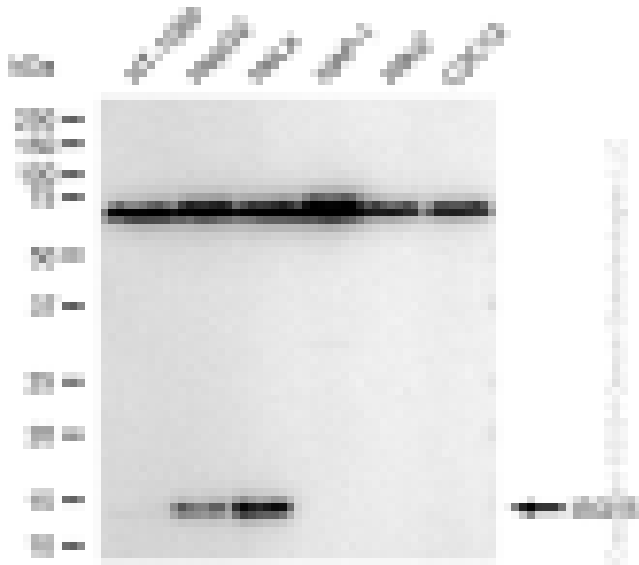
Gene ID

Other Names

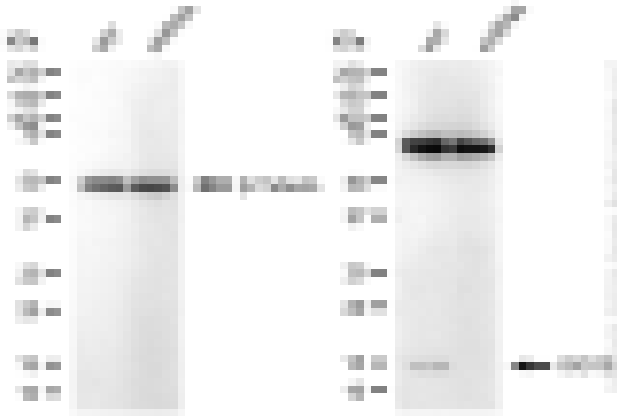
Function

Cellular location

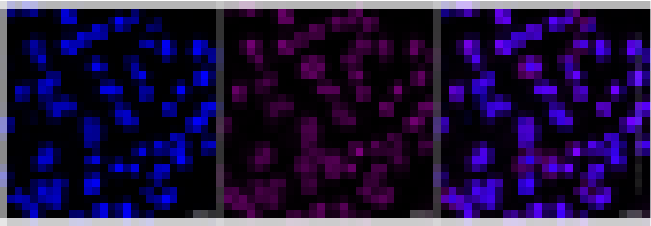
Note



Western blotting analysis using anti-ISG15 antibody (Cat#ABG1567). Total cell lysates (30 µg) from various cell lines were loaded and separated by SDS-PAGE. The blot was incubated with anti-ISG15 antibody (Cat#ABG1567, 1:5,000) and HRP-conjugated goat anti-rabbit secondary antibody respectively.



Western blotting analysis using anti-ISG15 antibody (Cat#ABG1567). ISG15 expression in wild-type (WT) and ISG15 shRNA knockdown (KD) HepG2 cells with 20 μ g of total cell lysates. β -Tubulin serves as a loading control. The blot was incubated with anti-ISG15 antibody (Cat#ABG1567, 1:5,000) and HRP-conjugated goat anti-rabbit secondary antibody respectively.



Immunocytochemical staining of HepG2 cells with anti-ISG15 antibody (Cat#ABG1567, 1:1,000). Nuclei were stained blue with DAPI; ISG15 was stained magenta with Alexa Fluor® 647. Images were taken using Leica stellaris 5. Protein abundance based on laser Intensity and smart gain: Medium. Scale bar: 20 μ m.