

KD-Validated Anti-MARK2 Rabbit Monoclonal Antibody

Rabbit monoclonal antibody

ABG1618

Product Overview

Name	KD-Validated Anti-MARK2 Rabbit Monoclonal Antibody		
Catalog #	ABG1618		
Clonality	Monoclonal		
Accession(Primary)	Q7KZI7		
Application Note (Approx.)	WB1:5,000	FC1:2,000	ICC1:1,000
Precautions			

Target information(Q7KZI7)

Synonyms

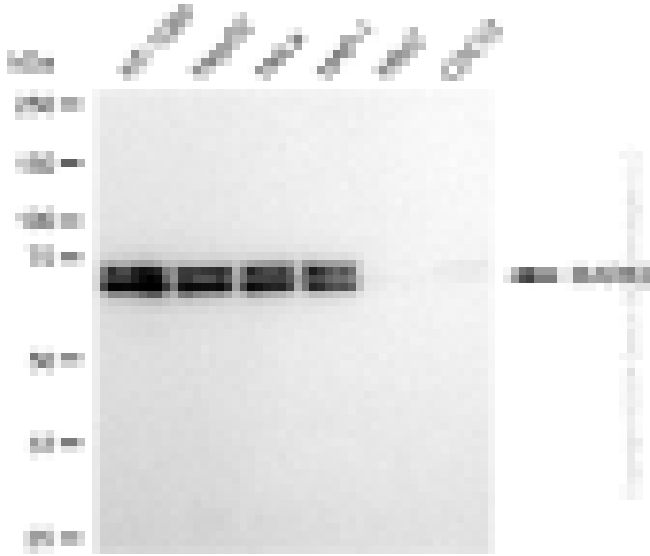
Gene ID

Other Names

Function

Cellular location

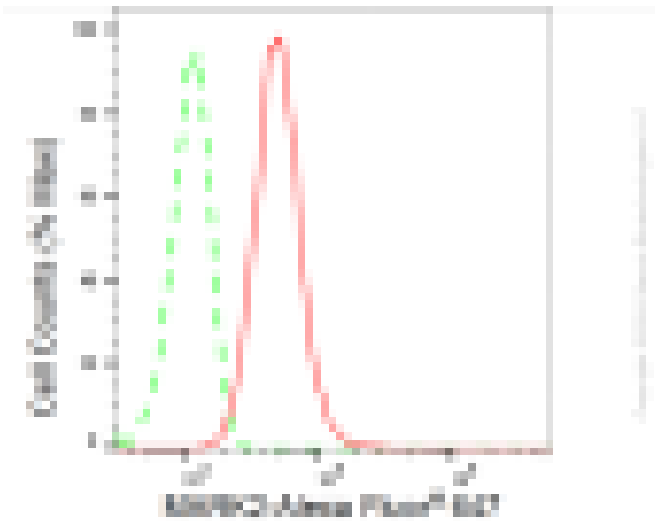
Note



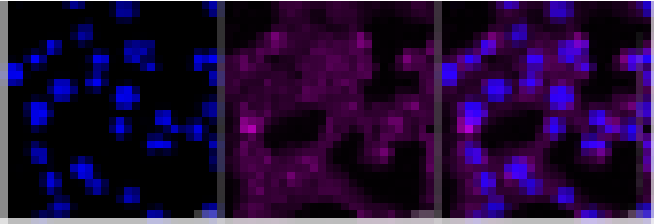
Western blotting analysis using anti-MARK2 antibody (Cat#ABG1618). Total cell lysates (30 µg) from various cell lines were loaded and separated by SDS-PAGE. The blot was incubated with anti-MARK2 antibody (Cat#ABG1618, 1:5,000) and HRP-conjugated goat anti-rabbit secondary antibody respectively.



Western blotting analysis using anti-MARK2 antibody (Cat#ABG1618). MARK2 expression in wild type (WT) and MARK2 shRNA knockdown (KD) HeLa cells with 20 μ g of total cell lysates. β -Tubulin serves as a loading control. The blot was incubated with anti-MARK2 antibody (Cat#ABG1618, 1:5,000) and HRP-conjugated goat anti-rabbit secondary antibody respectively.



Flow cytometric analysis of MARK2 expression in HT-1080 cells using MARK2 antibody (Cat#ABG1618, 1:2,000). Green, isotype control; red, MARK2.



Immunocytochemical staining of HT-1080 cells with anti-MARK2 antibody (Cat#ABG1618, 1:1,000). Nuclei were stained blue with DAPI; MARK2 was stained magenta with Alexa Fluor® 647. Images were taken using Leica stellaris 5. Protein abundance based on laser Intensity and smart gain: Medium. Scale bar: 20 μ m.
