

# KD-Validated Anti-NK2 Homeobox 1 Rabbit Monoclonal Antibody

Rabbit monoclonal antibody

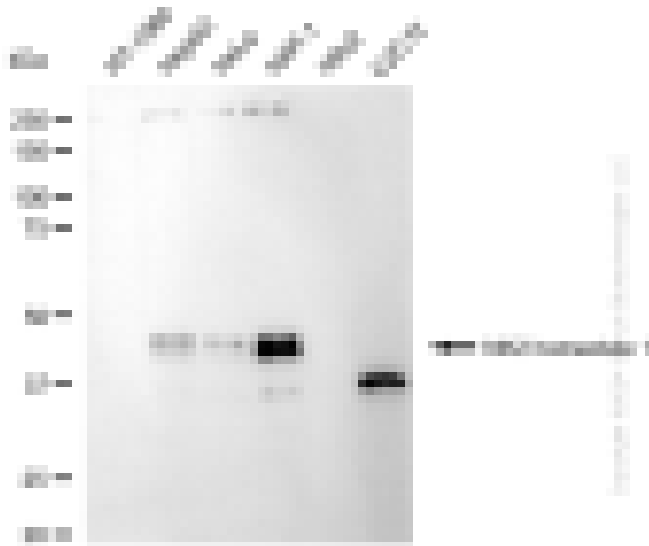
ABG1889

## Product Overview

<b>Name</b>	KD-Validated Anti-NK2 Homeobox 1 Rabbit Monoclonal Antibody
<b>Catalog #</b>	ABG1889
<b>Clonality</b>	Monoclonal
<b>Accession(Primary)</b>	P43699
<b>Application Note (Approx.)</b>	WB1:5,000 FC1:2,000
<b>Precautions</b>	

## Target information(P43699)

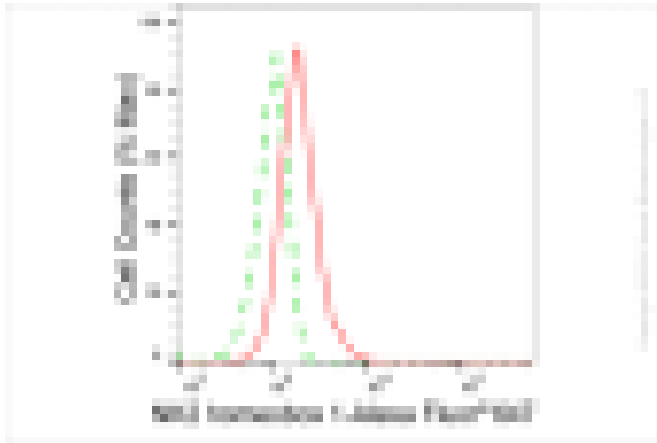
**Synonyms****Gene ID****Other Names****Function****Cellular location****Note**



Western blotting analysis using anti-NK2 homeobox 1 antibody (Cat#ABG1889). Total cell lysates (30 µg) from various cell lines were loaded and separated by SDS-PAGE. The blot was incubated with anti-NK2 homeobox 1 antibody (Cat#ABG1889, 1:5,000) and HRP-conjugated goat anti-rabbit secondary antibody respectively.



Western blotting analysis using anti-NK2 homeobox 1 antibody (Cat#ABG1889). NK2 homeobox 1 expression in wild type (WT) and NK2 homeobox 1 (NKX2-1) shRNA knockdown (KD) HeLa cells with 30 µg of total cell lysates. Hsp90 serves as a loading control. The blot was incubated with anti-NK2 homeobox 1 antibody (Cat#ABG1889, 1:5,000) and HRP-conjugated goat anti-rabbit secondary antibody respectively.



Flow cytometric analysis of NK2 homeobox 1 expression in HAP-1 cells using anti-NK2 homeobox 1 antibody (Cat#ABG1889, 1:2,000). Green, isotype control; red, NK2 homeobox 1.