

KD-Validated Anti-Phospho-AMPK alpha 1 (S496) Rabbit Monoclonal Antibody

Rabbit monoclonal antibody

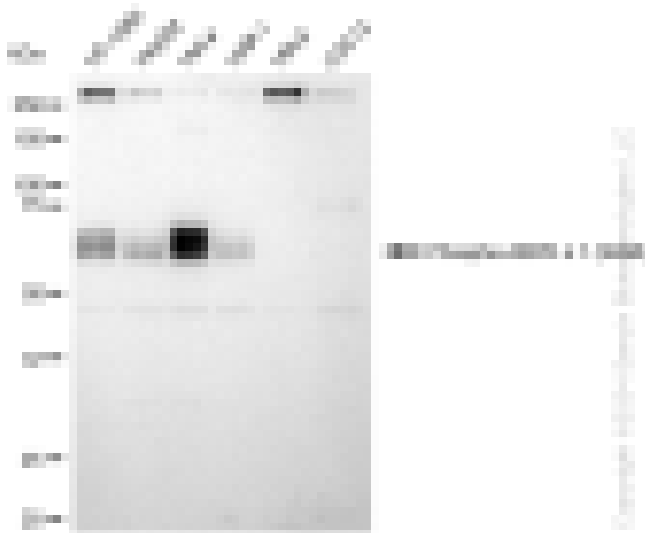
ABG1271

Product Overview

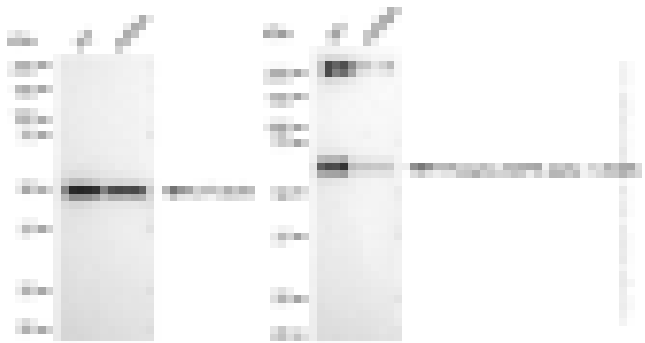
Name	KD-Validated Anti-Phospho-AMPK alpha 1 (S496) Rabbit Monoclonal Antibody
Catalog #	ABG1271
Clonality	Monoclonal
Accession(Primary)	Q13131
Application Note (Approx.)	WB1:5,000 FC1:2,000 ICC1:1,000
Precautions	

Target information(Q13131)

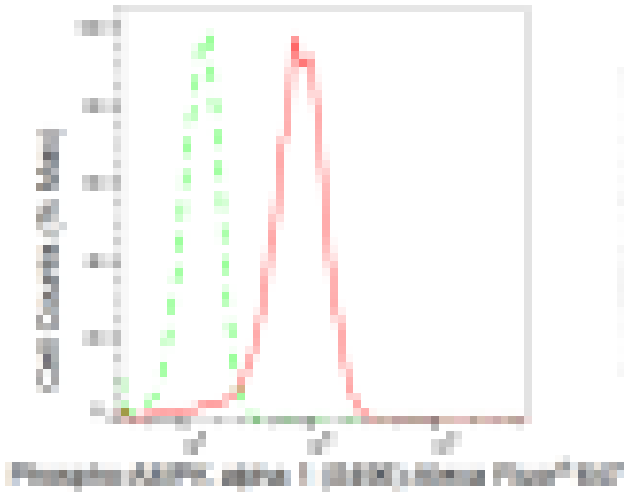
Synonyms**Gene ID****Other Names****Function****Cellular location****Note**



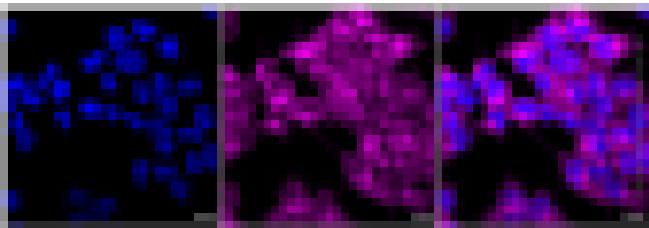
Western blotting analysis using anti-Phospho-AMPK alpha 1 (S496) antibody (Cat#ABG1271). Total cell lysates (30 μ g) from various cell lines were loaded and separated by SDS-PAGE. The blot was incubated with anti-Phospho-AMPK alpha 1 (S496) antibody (Cat#ABG1271, 1:5,000) and HRP-conjugated goat anti-rabbit secondary antibody respectively.



Western blotting analysis using anti-Phospho-AMPK alpha 1 (S496) antibody (Cat#ABG1271). Phospho-AMPK alpha 1 (S496) expression in wild type (WT) and phospho-AMPK alpha 1 (S496) shRNA knockdown (KD) HeLa cells with 30 μ g of total cell lysates. β -Tubulin serves as a loading control. The blot was incubated with anti-Phospho-AMPK alpha 1 (S496) antibody (Cat#ABG1271, 1:5,000) and HRP-conjugated goat anti-rabbit secondary antibody respectively.



Flow cytometric analysis of Phospho-AMPK alpha 1 (S496) expression in HeLa cells using Phospho-AMPK alpha 1 (S496) antibody (Cat#ABG1271, 1:2,000). Green, isotype control; red, Phospho-AMPK alpha 1 (S496).



Immunocytochemical staining of HeLa cells with Phospho-AMPK alpha 1 (S496) antibody (Cat#ABG1271, 1:1,000). Nuclei were stained blue with DAPI; Phospho-AMPK alpha 1 (S496) was stained magenta with Alexa Fluor® 647. Images were taken using Leica stellaris 5. Protein abundance based on laser Intensity and smart gain: Medium. Scale bar: 20 µm.