

KD-Validated Anti-Phospho-BCAR1 (Y410) Rabbit

Rabbit monoclonal antibody

ABG1363

Product Overview

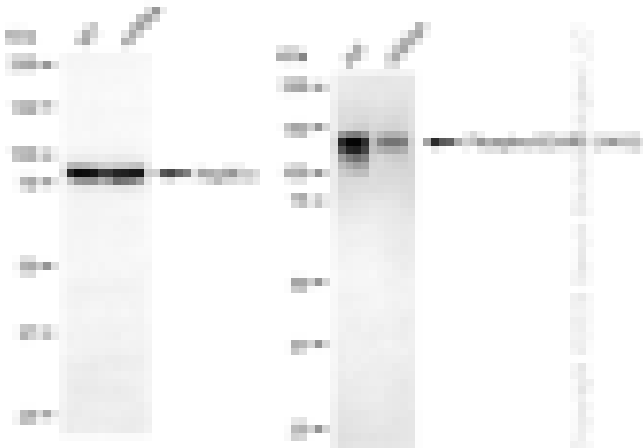
Name	KD-Validated Anti-Phospho-BCAR1 (Y410) Rabbit Monoclonal Antibody
Catalog #	ABG1363
Clonality	Monoclonal
Accession(Primary)	P56945
Application Note (Approx.)	WB1:5,000 FC1:2,000
Precautions	

Target information(P56945)

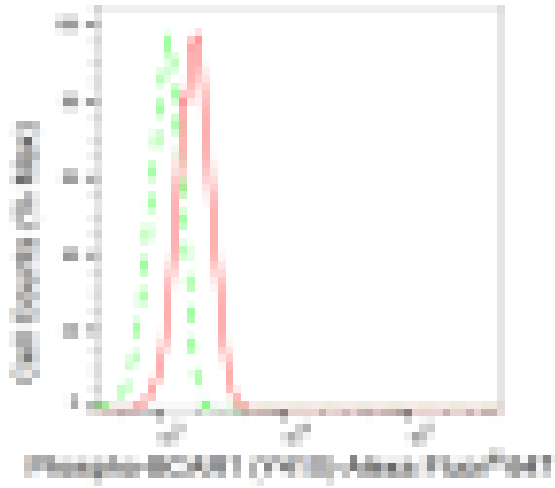
Synonyms**Gene ID****Other Names****Function****Cellular location****Note**



Western blotting analysis using anti-Phospho-BCAR1 (Y410) antibody (Cat#ABG1363). Total cell lysates (30 µg) from various cell lines were loaded and separated by SDS-PAGE. The blot was incubated with anti-Phospho-BCAR1 (Y410) antibody (Cat#ABG1363, 1:5,000) and HRP-conjugated goat anti-rabbit secondary antibody respectively.



Western blotting analysis using anti-Phospho-BCAR1 (Y410) antibody (Cat#ABG1363). Phospho-BCAR1 (Y410) expression in wild type (WT) and BCAR1 shRNA knockdown (KD) HeLa cells with 20 µg of total cell lysates. Hsp90 serves as a loading control. The blot was incubated with anti-Phospho-BCAR1 (Y410) antibody (Cat#ABG1363, 1:5,000) and HRP-conjugated goat anti-rabbit secondary antibody respectively.



Flow cytometric analysis of Phospho-BCAR1 (Y410) expression in C2C12 cells using Phospho-BCAR1 (Y410) antibody (Cat#ABG1363, 1:2,000). Green, isotype control; red, Phospho-BCAR1 (Y410).