

KD-Validated Anti-Phospho-GSK3 (alpha + beta)(Y216 + Y279) Rabbit Monoclonal Antibody

Rabbit monoclonal antibody

ABG1436

Product Overview

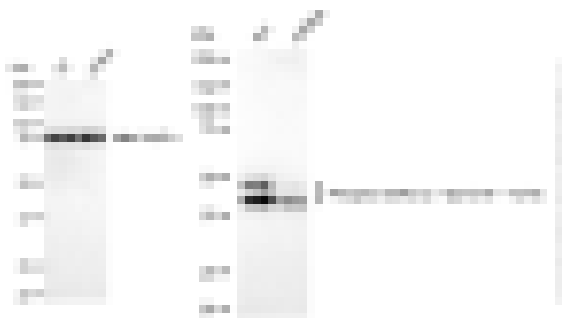
Name	KD-Validated Anti-Phospho-GSK3 (alpha + beta)(Y216 + Y279) Rabbit Monoclonal Antibody
Catalog #	ABG1436
Clonality	Monoclonal
Accession(Primary)	P49840/P49841
Application Note (Approx.)	WB1:5,000 FC1:2,000 ICC1:1,000
Precautions	

Target information(P49840/P49841)

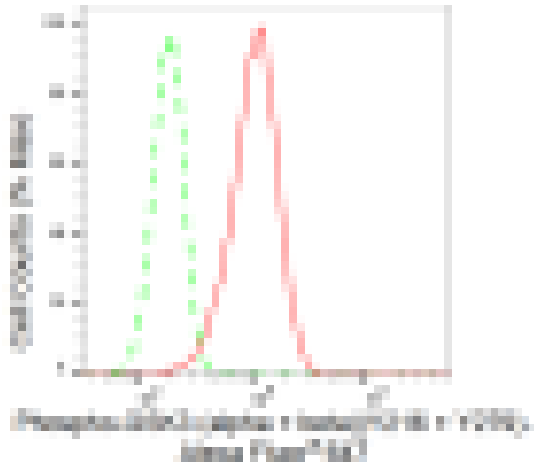
Synonyms**Gene ID****Other Names****Function****Cellular location****Note**



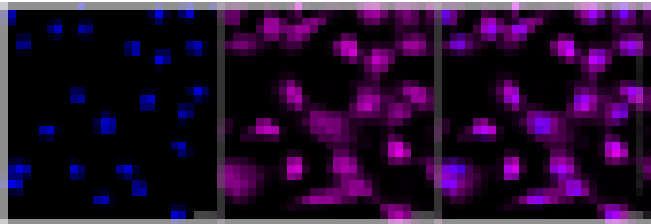
Western blotting analysis using anti-Phospho-GSK3 (alpha + beta)(Y216 + Y279) antibody (Cat#ABG1436). Total cell lysates (30 µg) from various cell lines were loaded and separated by SDS-PAGE. The blot was incubated with anti-Phospho-GSK3 (alpha + beta)(Y216 + Y279) antibody (Cat#ABG1436, 1:5,000) and HRP-conjugated goat anti-rabbit secondary antibody respectively.



Western blotting analysis using anti-Phospho-GSK3 (alpha + beta)(Y216 + Y279) antibody (Cat#ABG1436). Phospho-GSK3 (alpha + beta)(Y216 + Y279) expression in wild type (WT) and Phospho-GSK3 (alpha + beta)(Y216 + Y279) shRNA knockdown (KD) HeLa cells with 30 µg of total cell lysates. Hsp90 serves as a loading control. The blot was incubated with anti-Phospho-GSK3 (alpha + beta)(Y216 + Y279) antibody (Cat#ABG1436, 1:5,000) and HRP-conjugated goat anti-rabbit secondary antibody respectively.



Flow cytometric analysis of Phospho-GSK3 (alpha + beta)(Y216 + Y279) expression in C2C12 cells using Phospho-GSK3 (alpha + beta)(Y216 + Y279) antibody (Cat#ABG1436, 1:2,000). Green, isotype control; red, Phospho-GSK3 (alpha + beta)(Y216 + Y279).



Immunocytochemical staining of C2C12 cells with Phospho-GSK3 (alpha + beta)(Y216 + Y279) antibody (Cat#ABG1436, 1:1,000). Nuclei were stained blue with DAPI; Phospho-GSK3 (alpha + beta)(Y216 + Y279) was stained magenta with Alexa Fluor® 647. Images were taken using Leica stellaris 5. Protein abundance based on laser Intensity and smart gain: Medium. Scale bar: 20 μ m.