

KD-Validated Anti-Phospho-beta Arrestin 1 (S412) Rabbit Monoclonal Antibody

Rabbit monoclonal antibody

ABG1358

Product Overview

Name	KD-Validated Anti-Phospho-beta Arrestin 1 (S412) Rabbit Monoclonal Antibody
Catalog #	ABG1358
Clonality	Monoclonal
Accession(Primary)	P49407
Application Note (Approx.)	WB1:5,000 FC1:2,000 ICC1:1,000
Precautions	

Target information(P49407)

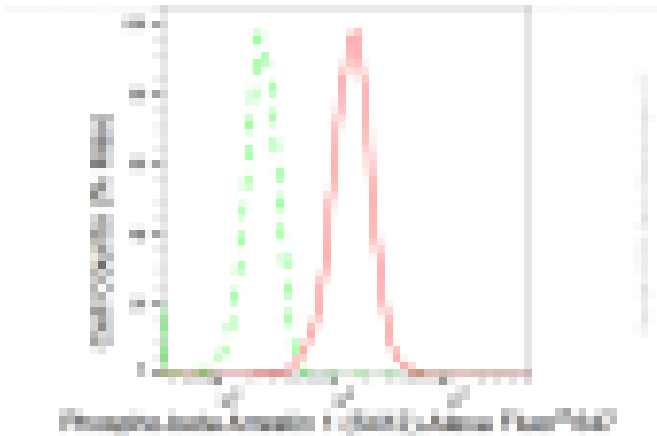
Synonyms**Gene ID****Other Names****Function****Cellular location****Note**



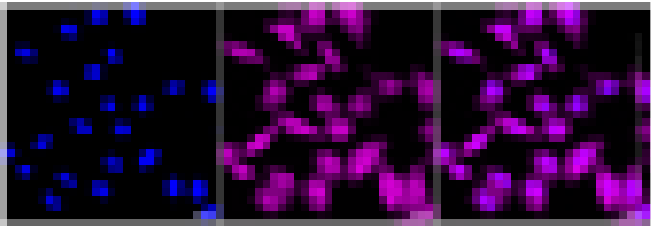
Western blotting analysis using anti-Phospho-beta Arrestin 1 (S412) antibody (Cat#ABG1358). Total cell lysates (30 µg) from various cell lines were loaded and separated by SDS-PAGE. The blot was incubated with anti-Phospho-beta Arrestin 1 (S412) antibody (Cat#ABG1358, 1:5,000) and HRP-conjugated goat anti-rabbit secondary antibody respectively.



Western blotting analysis using anti-Phospho-beta Arrestin 1 (S412) antibody (Cat#ABG1358). Phospho-beta Arrestin 1 (S412) expression in wild type (WT) and Phospho-beta Arrestin 1 (S412) shRNA knockdown (KD) HeLa cells with 30 µg of total cell lysates. Hsp90 serves as a loading control. The blot was incubated with anti-Phospho-beta Arrestin 1 (S412) antibody (Cat#ABG1358, 1:5,000) and HRP-conjugated goat anti-rabbit secondary antibody respectively.



Flow cytometric analysis of Phospho-beta Arrestin 1 (S412) expression in HepG2 cells using Phospho-beta Arrestin 1 (S412) antibody (Cat#ABG1358, 1:2,000). Green, isotype control; red, Phospho-beta Arrestin 1 (S412).



Immunocytochemical staining of HepG2 cells with Phospho-beta Arrestin 1 (S412) antibody (Cat#ABG1358, 1:1,000). Nuclei were stained blue with DAPI; Phospho-beta Arrestin 1 (S412) was stained magenta with Alexa Fluor® 647. Images were taken using Leica stellaris 5. Protein abundance based on laser Intensity and smart gain: Medium. Scale bar: 20 μ m.