

KD-Validated Anti-Phospho-c-Jun (T91) Rabbit Monoclonal Antibody

Rabbit monoclonal antibody

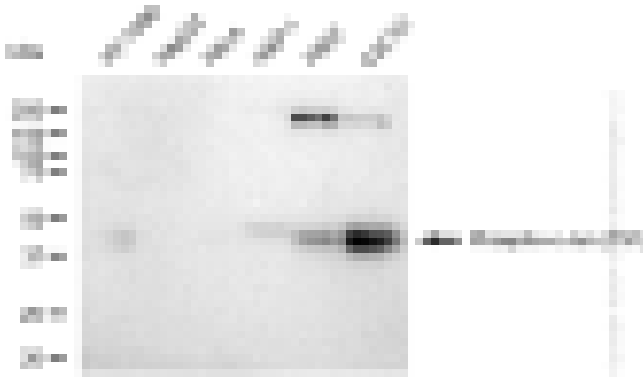
ABG1448

Product Overview

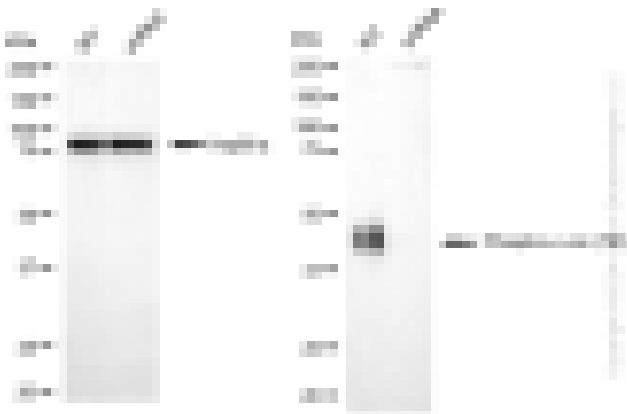
Name	KD-Validated Anti-Phospho-c-Jun (T91) Rabbit Monoclonal Antibody
Catalog #	ABG1448
Clonality	Monoclonal
Accession(Primary)	P05412
Application Note (Approx.)	WB1:5,000 FC1:2,000 ICC1:1,000
Precautions	

Target information(P05412)

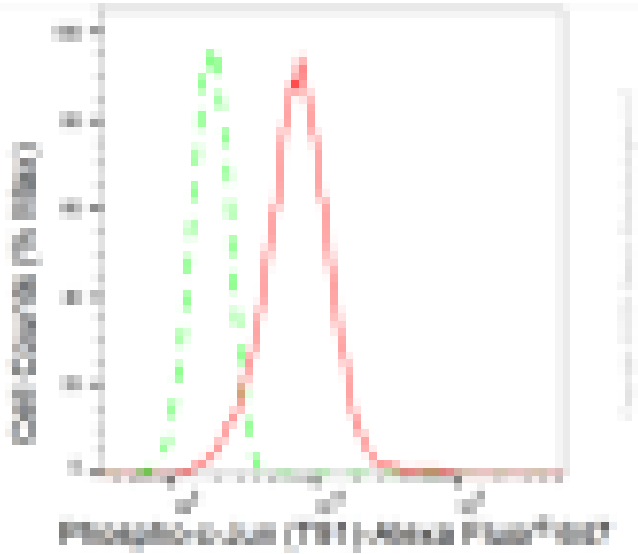
Synonyms**Gene ID****Other Names****Function****Cellular location****Note**



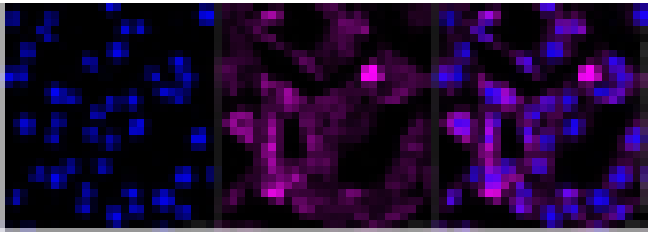
Western blotting analysis using anti-Phospho-c-Jun (T91) antibody (Cat#ABG1448). Total cell lysates (30 μ g) from various cell lines were loaded and separated by SDS-PAGE. The blot was incubated with anti-Phospho-c-Jun (T91) antibody (Cat#ABG1448, 1:5,000) and HRP-conjugated goat anti-rabbit secondary antibody respectively.



Western blotting analysis using anti-phospho-c-Jun (T91) antibody (Cat#ABG1448). Phospho-c-Jun (T91) expression in wild-type (WT) and JUN shRNA knockdown (KD) C2C12 cells with 20 μ g of total cell lysates. Hsp90 ? serves as a loading control. The blot was incubated with anti-phospho-c-Jun (T91) antibody (Cat#ABG1448, 1:5,000) and HRP-conjugated goat anti-rabbit secondary antibody respectively.



Flow cytometric analysis of Phospho-c-Jun (T91) expression in C2C12 cells using Phospho-c-Jun (T91) antibody (Cat#ABG1448, 1:2,000). Green, isotype control; red, Phospho-c-Jun (T91).



Immunocytochemical staining of C2C12 cells with anti-Phospho-c-Jun (T91) antibody (Cat#ABG1448, 1:1,000). Nuclei were stained blue with DAPI; Phospho-c-Jun (T91) was stained magenta with Alexa Fluor® 647. Images were taken using Leica stellaris 5. Protein abundance based on laser Intensity and smart gain: Medium. Scale bar, 20 μ m.