

# Poliovirus Receptor/PVR Rabbit mAb

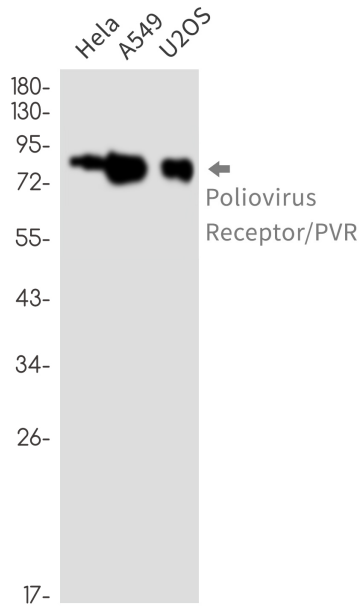
ABZ3352

## Product Overview

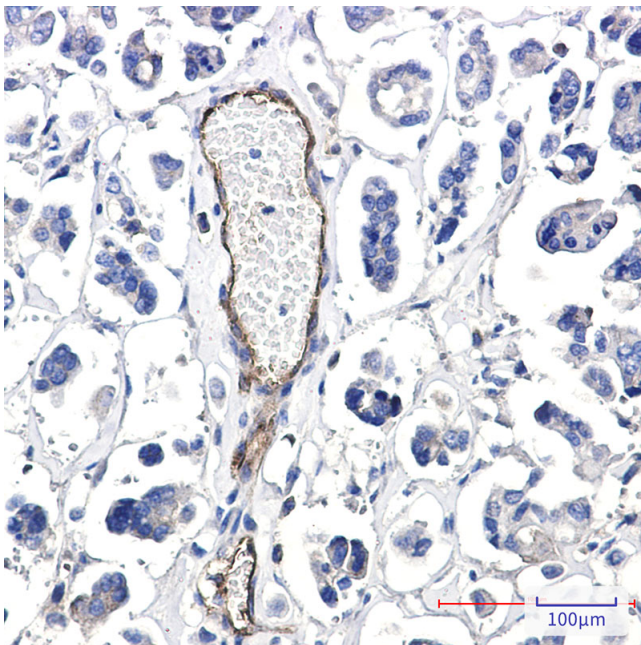
<b>Name</b>	Poliovirus Receptor/PVR Rabbit mAb
<b>Accession(Primary)</b>	P15151
<b>Host Species</b>	Rabbit
<b>Clonality</b>	Monoclonal
<b>Isotype</b>	IgG
<b>Species Reactivity</b>	Human
<b>Calculated MW</b>	Calculated MW: 45 kDa; Observed MW: 60-80 kDa
<b>Recommended Dilution</b>	WB-1:500-1:1000; IHC-1:200-1:500

## Target information (P15151)

<b>Gene Name</b>	PVR
<b>About Gene Symbol</b>	PVR (PVR Cell Adhesion Molecule) is a membrane receptor involved in adaptive immunity. It is an important research target in infectious disease and is widely studied to elucidate cellular mechanisms and identify therapeutic targets.



Western blot analysis of Poliovirus Receptor/PVR in HeLa, A549, U2OS lysates using Poliovirus Receptor antibody.



Immunohistochemistry analysis of paraffin-embedded Human Cholangiocarcinoma using Poliovirus Receptor/PVR antibody. High-pressure and temperature Sodium Citrate pH 6.0 was used for antigen retrieval.